

# Structural Dynamics of Local Economies in Tourist Resorts from Romania

<sup>1</sup>Alexandra Grecu, Faculty of Administration and Business, University of Bucharest, Romania, [alexandra.grecu@faa.unibuc.ro](mailto:alexandra.grecu@faa.unibuc.ro)

<sup>2</sup>Ionuț Constantin, Faculty of Administration and Business, University of Bucharest, Romania, [ionut.constantin@faa.unibuc.ro](mailto:ionut.constantin@faa.unibuc.ro)

<sup>3</sup>Raluca Dinescu, Faculty of Administration and Business, University of Bucharest, Romania, [raluca.dinescu@faa.unibuc.ro](mailto:raluca.dinescu@faa.unibuc.ro)

<sup>4</sup>Răzvan Mihail Papuc, Faculty of Administration and Business, University of Bucharest, Romania, [razvanmihail.papuc@faa.unibuc.ro](mailto:razvanmihail.papuc@faa.unibuc.ro)

<sup>5</sup>Aurel-Mihail Băloi, Research Center for Integrated Analysis and Territorial Management, Romania, [aurel-mihail.baloi@faa.unibuc.ro](mailto:aurel-mihail.baloi@faa.unibuc.ro)

## Abstract

In the current economic context, the tourism sector is seen as a viable economic alternative in terms of income growth in local economies that have tourism resources. It becomes important to know the economic contribution that this sector can bring to the local level so that decision-makers can take the best decisions on the development of local economies by integrating this economic sector into the management plans developed. The obtained results are an answer to the question: To what extent does the status of a tourist resort of a locality correspond to a high share of tourist activities in the total local economy?

In this study, we aim to analyze the tourism sector, for the period 2000 – 2021, through two economic indicators, the number of employees and turnover (euro) in the tourist resorts from Romania, attested in accordance with Government Decision no. 910 of 2022 for the approval of the certification of some localities as tourist resorts of national or local interest, and regarding the amendment of annex no. 5 to Government Decision no. 852/2008 for the approval of the rules and criteria for the attestation of tourist resorts. The economic indicators, at the level of administrative unit level and four-digit NACE Code, were analyzed from an evolutionary perspective for the 166 resorts from Romania (54 of national interest and 112 of local interest). In this regard, a database was created that was used to create evolution charts and trend matrices regarding the evolution of the two indicators as a total and the tourism sector, as well as the share of tourism in the total economy.

The results of the study show the evolution of the tourism sector and its contribution to the local economy of tourist resorts analyzed in terms of economic indicators.

**Keywords:** local economy, Romania, structural dynamics, tourist resorts

---

<sup>1</sup> University Assistant, University of Bucharest, Bucharest, Romania

<sup>2</sup> University Lecturer. University of Bucharest, Bucharest, Romania

<sup>3</sup> University Lecturer, University of Bucharest, Bucharest, Romania

<sup>4</sup> University Professor, University of Bucharest, Bucharest, Romania

<sup>5</sup> PhD student, University of Bucharest, Bucharest, Romania

## **1. Introduction**

Most regional tourism plans and policies are based on the assumption that tourism is a desirable development option for communities because its potential economic benefits will directly and indirectly contribute to improving the well-being of the destination community (Moscardo et al., 2017; Peptenatu et al., 2014, Briedenhann & Wickens, 2004; Chen & Chiou-Wei, 2009; Croes & Venegas, 2008; Holzner, 2011; Ma & Hassink, 2013; Matarrita-Cascante, 2010; Tang & Tan, 2015; Tugcu, 2014; Andrades & Dimanche, 2017; Daniels et al., 2005). Tourism is often described by its proponents as an engine of economic growth, inclusive development and environmental sustainability (UNWTO, 2013). Tourism development is a major driver of socio-economic dynamics. Its importance is demonstrated by its high capacity to generate new jobs, improve local quality of life and enhance the competitiveness of regions. At the same time, tourism contributes to the discovery of the most precious cultural and environmental resources which, once highlighted, improve the internal and external image of a country, region or location. The recent boom in this phenomenon has led to the emergence and development of a genuine industry, a separate sector of the national economy (Ohlan, 2017). As a result, the development of this branch of the economy places the integrated development of local economies in a favorable context, through its direct impact on other areas such as agriculture, construction, transport, trade, etc. It should also be borne in mind that the development of the tourism sector can play a positive role in local economies (Dristakis, 2004; Belloumi, 2010), the multiplier effect being generated directly, by increasing local revenue and we refer here to tourism consumption, but also indirectly, creating business opportunities, jobs in services, upgrading local infrastructure or creating a local identity (Garcia, 2005; Hernandez & Gonzalez, 2013; Rosentraub & Joo, 2009). Its competitiveness is based on attractive natural resources and elements of cultural heritage as well as their appropriate exposure and use (Pompurová & Šimočková, 2014).

The study aims to analyze the tourism sector in the 166 tourist resorts in Romania that are in accordance with Government Decision 910 of 2022, through the prism of two economic indicators considered relevant, turnover and number of employees, for a statistically relevant period of time. For this analysis, the cartographic method was used, for the distribution of tourist resorts on the map, and the graphical method, illustrating the analysis of indicators. The shares of turnover/employees in tourism in the total local economy were calculated as a total (total for all tourist resorts), but also trend matrices with these shares were made for each tourist resort, in order to better understand the tourism phenomenon.

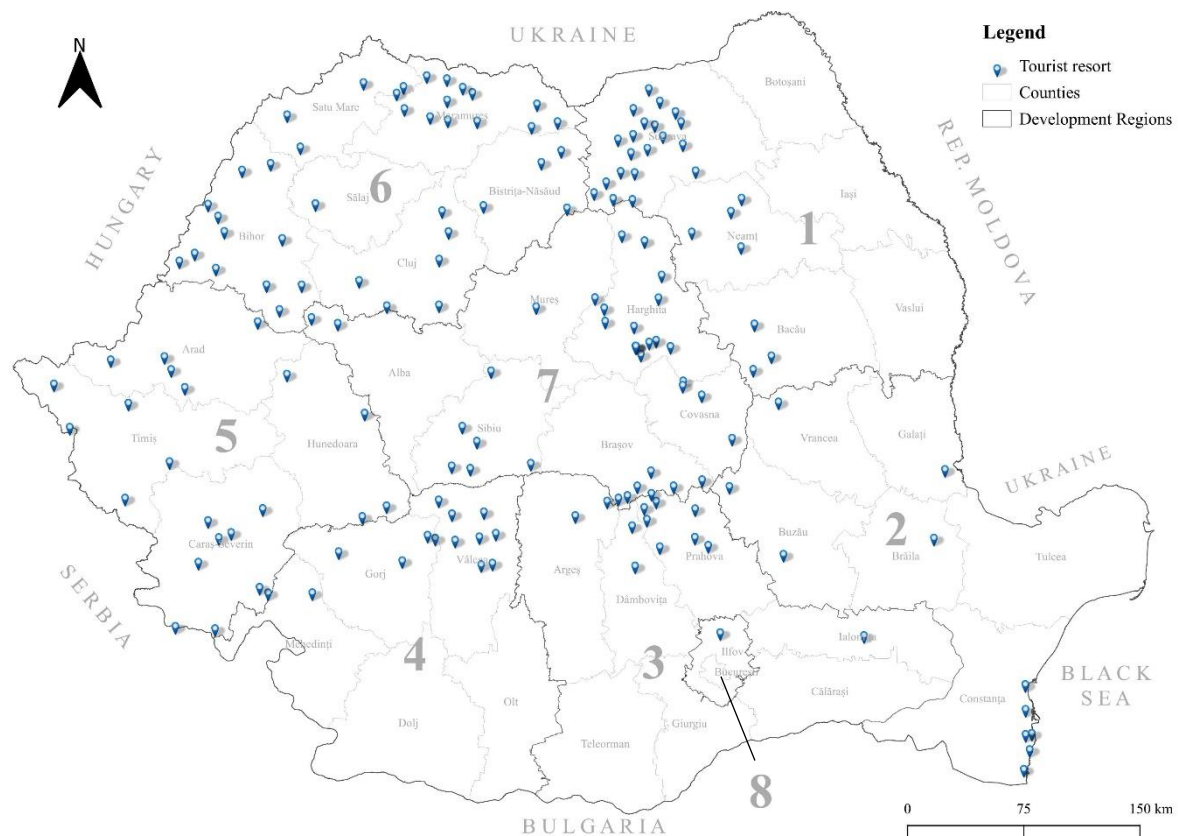
With this analysis, we wanted to answer the question: To what extent does the status of a tourist resort of a locality correspond to a high share of tourist activities in the total local economy?

## **2. Methodology**

### ***2.1. Study area***

The tourist resorts presented in this study are analyzed in terms of the contribution of the tourism sector to the total local economy. According to Government Decision no. 910 of 2022 for the approval of the certification of some localities as tourist resorts of national or local interest, and regarding the amendment of annex no. 5 to Government Decision no. 852/2008 for the approval of the rules and criteria for the attestation of tourist resorts, there are 166 tourist resorts in Romania (54 of national interest and 112 of local interest).

The cartographic model (Figure 1) was created using the open-source software QGIS (Quantum Geographic Information System) and represents the spatial distribution of tourist resorts. It should be mentioned that although there are 166 tourist resorts, in the cartographic model and in Table 1, which shows the tourist resorts, there are only 157, because Băile Felix and 1 Mai, Crivaia and Semenic, North Eforie and South Eforie, Mangalia, Cap Aurora, Jupiter, Neptun-Olimp, Saturn and Venus; Predeal, Pârâul Rece and Timișul de Sus, share the same administrative territorial unit.



**Figure 1.** Location of tourist resorts on the map of Romania

1. North-East Development Region; 2. South-East Development Region; 3. South Muntenia Development Region; 4. South-West Oltenia Development Region; 5. West Development Region; 6. North-West Development Region; 7. Center Development Region; 8. Bucharest-Ilfov Development Region.

**Table 1.** List of tourist resorts in Romania (according to Government Decision no. 910/2022)

No. crt.	Tourist resort	County	Development region	No. Crt	Tourist resort	County	Development region
1.	Slănic-Moldova	Bacău	North-East	79.	Straja	Hunedoara	West
2.	Târgu Ocna	Bacău		80.	Uricani	Hunedoara	
3.	Moinești Băi Area	Bacău		81.	Vața de Jos	Hunedoara	
4.	Băltătești	Neamț		82.	Parâng – Petroșani Area	Hunedoara	
5.	Durău	Neamț		83.	Buziaș	Timiș	
6.	Târgu-Neamț	Neamț		84.	Călăcea	Timiș	
7.	Tourist area of Piatra-Neamț municipality	Neamț		85.	Deta	Timiș	
8.	Cacica	Suceava		86.	Jimbolia	Timiș	

9.	Câmpulung Moldovenesc	Suceava		87.	Sânnicolau Mare	Timiș	
10.	Dorna Candrenilor	Suceava		88.	Băile Felix/I Mai	Bihor	
11.	Dorna-Arini	Suceava		89.	Beiuș	Bihor	
12.	Frumosu	Suceava		90.	Mădăraș	Bihor	
13.	Fundu Moldovei	Suceava		91.	Marghita	Bihor	
14.	Gura Humorului	Suceava		92.	Săcueni	Bihor	
15.	Mălini	Suceava		93.	Salonta	Bihor	
16.	Moldovița	Suceava		94.	Stâna de Vale	Bihor	
17.	Panaci	Suceava		95.	Ștei	Bihor	
18.	Poiana Stampei	Suceava		96.	Tinca	Bihor	
19.	Pojorâta	Suceava		97.	Vadu Crișului	Bihor	
20.	Putna	Suceava		98.	Tourist area of Borș commune	Bihor	
21.	Sadova	Suceava		99.	Tourist area historical center - Coridorul Crișul Repede	Bihor	
22.	Șaru Dornei	Suceava		100.	Colibița	Bistrița-Năsăud	
23.	Solca	Suceava		101.	Rodna	Bistrița-Năsăud	
24.	Sucevița	Suceava		102.	Sângeorz-Băi	Bistrița-Năsăud	
25.	Vama	Suceava		103.	Băile Figa Recreation Area - Beclean city	Bistrița-Năsăud	
26.	Vatra Dornei	Suceava		104.	Băile Băița	Cluj	
27.	Vatra Moldoviței	Suceava		105.	Băile Turda	Cluj	
28.	Lacu Sărat	Brăila		106.	Jucu	Cluj	North-West
29.	Gura Sirluiului	Buzău		107.	Băile Ocna Dej Area (Dej municipality)	Cluj	
30.	Sărata Monteoru	Buzău		108.	Fântânele Area	Cluj	
31.	Costinești	Constanța		109.	Muntele Băișorii Area	Cluj	
32.	North Eforie/South Eforie	Constanța	South-East	110.	Bârsana	Maramureș	
33.	Mamaia	Constanța		111.	Borșa	Maramureș	
34.	Mangalia (Cap Aurora, Jupiter, Neptun-Olimp, Saturn, Venus)	Constanța		112.	Botiza	Maramureș	
35.	Techirghiol	Constanța		113.	Cavnic	Maramureș	
36.	Mamaia North Area	Constanța		114.	Moisei	Maramureș	
37.	Tulucești	Galați		115.	Ocna Șugatag	Maramureș	
38.	Soveja	Vrancea		116.	Oncești	Maramureș	
39.	Albeștii de Muscel	Argeș		117.	Săpânța	Maramureș	
40.	Dâmbovicioara	Argeș		118.	Sighetu Marmației	Maramureș	
41.	Pucioasa	Dâmbovița		119.	Tăuții-Măgherauș	Maramureș	
42.	Peștera – Padina Area	Dâmbovița		120.	Vișeu de Sus	Maramureș	
43.	Amara	Ialomița		121.	Șuior-Baia Sprie Area	Maramureș	
44.	Azuga	Prahova	South-Muntenia	122.	Boghiș	Sălaj	
45.	Breaza	Prahova		123.	Carei	Satu Mare	
46.	Bușteni	Prahova		124.	Livada	Satu Mare	
47.	Cheia	Prahova		125.	Negrești-Oaș	Satu Mare	
48.	Sinaia	Prahova		126.	Tășnad	Satu Mare	
49.	Slănic Prahova	Prahova		127.	Vama	Satu Mare	
50.	Vălenii de Munte	Prahova		128.	Albac	Alba	
51.	Baia de Fier	Gorj		129.	Arieșeni	Alba	
52.	Novaci	Gorj		130.	Bran	Brașov	
53.	Peștișani	Gorj		131.	Moieciu	Brașov	
54.	Polovragi	Gorj		132.	Poiana Brașov	Brașov	
55.	Săcelu	Gorj		133.	Predeal/Pârâul Rece/Timișu de Sus	Brașov	
56.	Bala	Mehedinți	South-West Oltenia	134.	Râșnov	Brașov	
57.	Băile Govora	Vâlcea		135.	Săcele	Brașov	Centre
58.	Băile Olănești	Vâlcea		136.	Vama Buzăului	Brașov	
59.	Brezoi	Vâlcea		137.	Balványos	Covasna	
60.	Călimănești-Căciulata	Vâlcea		138.	Covasna	Covasna	
61.	Horezu	Vâlcea		139.	Băile Homorod	Harghita	
62.	Mălaia	Vâlcea		140.	Băile Tușnad	Harghita	
63.	Ocnele Mari	Vâlcea		141.	Borsec	Harghita	
64.	Voineasa	Vâlcea		142.	Corund	Harghita	
65.	Ghioroc	Arad	West	143.	Harghita-Băi	Harghita	
66.	Lipova	Arad		144.	Izvoru Mureșului	Harghita	

67.	Moneasa	Arad	146.	Lacu Roșu	Harghita
68.	Pecica	Arad	147.	Praid	Harghita
69.	Anina	Caraș-Severin	148.	Zetea	Harghita
70.	Băile Herculane	Caraș-Severin	149.	Băile Banffy Area (Toplița municipality)	Harghita
71.	Berzasca	Caraș-Severin	150.	Sângeorgiu de Mureș	Mureș
72.	Coronini	Caraș-Severin	151.	Sovata	Mureș
73.	Crivaia/Semenic	Caraș-Severin	152.	Bazna	Sibiu
74.	Mehadia	Caraș-Severin	153.	Cârțișoara	Sibiu
75.	Secu	Caraș-Severin	154.	Cisnădie	Sibiu
76.	Trei Ape	Caraș-Severin	155.	Ocna Sibiului	Sibiu
77.	Borlova - Muntele Mic Area, Turmu Ruieni commune	Caraș-Severin	156.	Păltiniș	Sibiu
78.	Geoagiu-Băi	Hunedoara	157.	Snagov	Ilfov
					Bucharest- Ilfov

## 2.2. Data analysis

The study is based on an economic database (project UB/1365), both at administrative unit level and at four-digit NACE code level (Classification of activities in the national economy), for two economic indicators considered relevant in the analysis of tourist resorts, turnover (€) and number of employees, for the period 2000 - 2021. With the help of the database, graphical representations have been made for the evolution of the above mentioned indicators such as: evolution of total turnover/total number of employees in tourist resorts, evolution of turnover/number of employees in tourism, share of turnover/number of employees in tourism in total turnover/number of employees in tourist resorts, evolution of the tourism sector by 4-digit NACE codes and their share in the total tourism sector (Tabel 2). Trend matrices of the share of the tourism sector for each tourist resort based on the two indicators were also produced for the same analysis period, 2000 - 2021. The shades of red in the trend matrix represent decreases in the share of tourism or very small increases in values, the shades of yellow/orange show a relatively constant evolution and the shades of green an increase in the share of tourism in tourist resorts.

**Table 2.** Four-digit NACE codes in the tourism sector

	NACE code		Information
1.	5510	Hotels and similar accommodation	This class includes: hotels, hotels in spa resorts, hotels with apartments, motels;
2.	5520	Holiday and other short-stay accommodation	This class includes accommodation services provided by: children's camps and other holiday homes guest houses and bungalows peasant houses and cottages without housekeeping services youth homes and mountain refuges;
3.	5530	Camping grounds, recreational vehicle parks and trailer parks	Provision of accommodation services in caravan parks, recreational camps and fishing and hunting camps parks for recreational vehicles; This class also includes accommodation services provided by: mountain or bivouac shelters for the installation of tents and/or sleeping bags;
4.	5590	Other accommodation	<ul style="list-style-type: none"> <li>• housing for students</li> <li>• school bedrooms</li> <li>• workers' homes</li> <li>• pensions and boarding schools</li> <li>• the bedroom cars</li> </ul>
5.	7911	Travel agency activities	Activities of agencies, primarily engaged in

			the sale of travel excursion, transport and accommodation services, wholesale or retail, to the general public and commercial customers;
6.	7912	Tour operator activities	Travel preparation activities that are sold through travel agencies or directly by tour operators;
7.	7990	Other reservation service and related activities	<ul style="list-style-type: none"> <li>• Other travel-related booking services: <ul style="list-style-type: none"> <li>- reservations for transport, hotels, restaurants, car rental, fun and sports, etc.</li> </ul> </li> <li>• time-sharing activities</li> <li>• ticket sales activities for theatrical, sporting and other entertainment and entertainment events</li> <li>• visitor support services: <ul style="list-style-type: none"> <li>- providing travel information to visitors</li> <li>- activities of tourist guides</li> </ul> </li> <li>• activities to promote tourism</li> </ul>
8.	9102	Museums activities	Activities of museums of all kinds;
9.	9103	Operation of historical sites and buildings and similar visitor attractions	Management and conservation of historic monuments and buildings;
10.	9104	Botanical and zoological gardens and nature reserves activities	Activities of botanical and zoos, including zoos for children; Activities of nature reserves, including the protection of wildlife, etc.

### 3. Results

In the territorial systems with tourism functionality in Romania, the evolution of turnover is upward in the period 2000 - 2008, followed by an evolution with increases and decreases in the period 2009 – 2021 (Figure 2). The biggest decrease in turnover occurred in 2009, when the drop was almost 28%, due to the global economic crisis (from 41,356,259,589 euros to 30,019,743,285 euros). Tourism contributed 2% to this decrease. During the pandemic period, turnover in tourist resorts (year 2020), decreased by 6.26% (2,743,970,869 €), where tourism accounted for 12%.

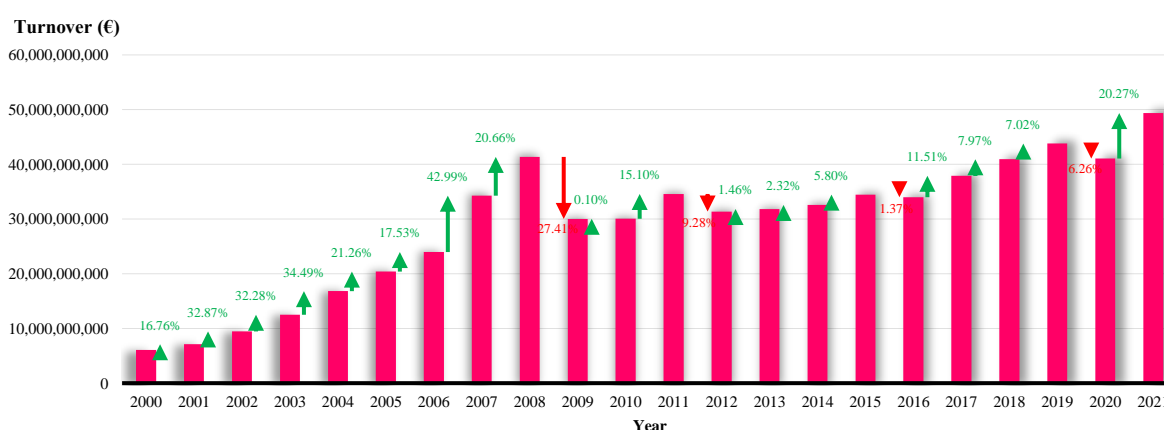
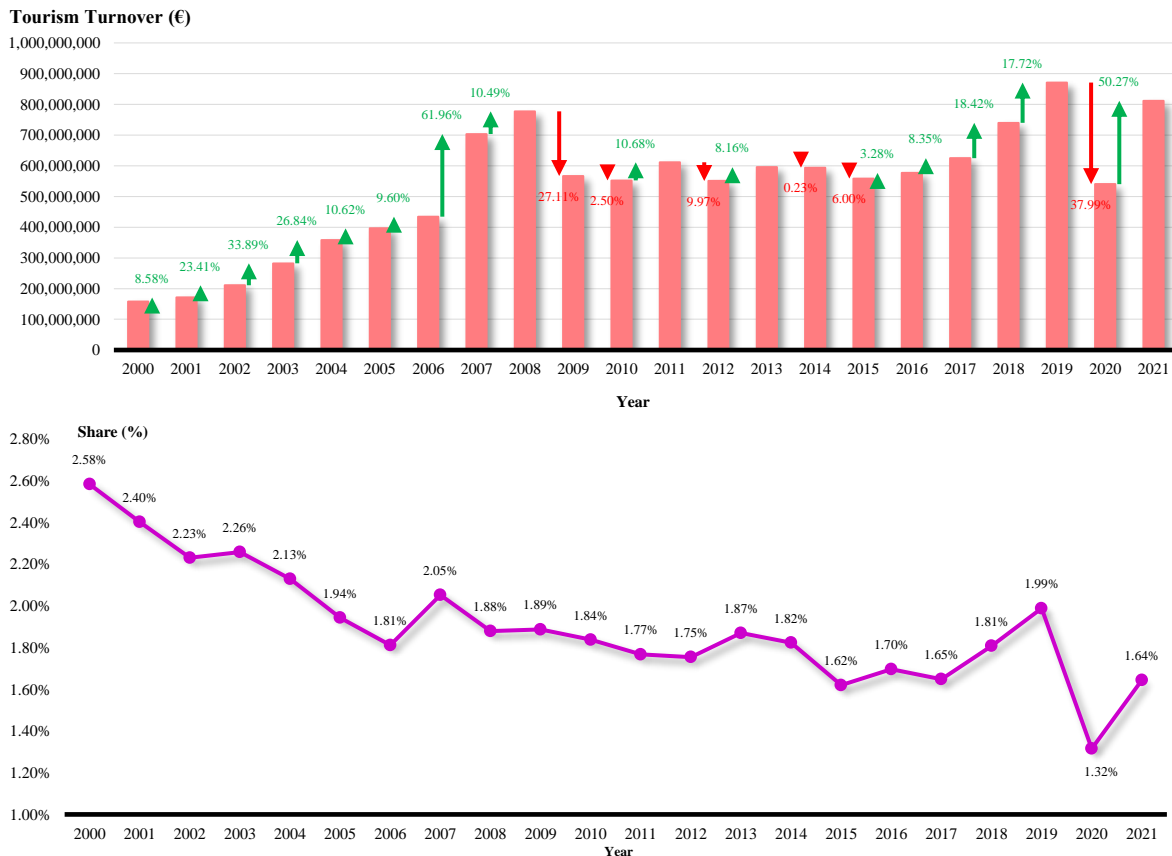


Figure 2. Evolution of turnover in tourist resorts from 2000 to 2021 (€)

Data source: project UB/1365

Turnover in the tourism sector shows a similar evolution to the total turnover in tourist resorts in Romania. The increase between 2000 and 2008 was 619,763,465 € (almost +400%) (Figure 3). The global economic crisis brings a 27% decrease for 2009 and 2.5% for 2010. Decreases in the indicator are also recorded in the years

2012, 2014, 2015, but also in the year 2020 when the effects of the pandemic caused tourism to have a decrease in turnover of 38%, but with a recovery in the following year of 271,524,156 € (percentage meaning +50%). The evolution of the share of tourism turnover in the total turnover of tourist resorts is decreasing, which means that the contribution of tourism to the local economy is decreasing, their economy being based on other areas of activity (Figure 3). The lowest value was recorded during the pandemic period in 2020, when this sector accounted for only 1.32% of the total areas of activity in the local economy of tourist resorts.



**Figure 3.** Evolution of tourism turnover and share of tourism turnover in total turnover of tourist resorts from 2000 to 2021

Data source: project UB/1365

From the analysis of the areas of activity in the tourism sector, we can see that the highest turnover is brought by Hotels and similar accommodation (Figure 4). This area has an upward trend, except for the periods of the two big events, the global economic crisis and the pandemic, which affected the activity quite a lot, with decreases of 132,427,755€ from 2008 to 2009 and 208,178,291€ from 2019 to 2020. Throughout the period under review, Hotels and similar accommodation accounted for over 55% of total tourism turnover (the peak was 72% in 2001) (Table 3). Other reservation service and related activities, had an upward trend until 2008, when a turnover of 120,933,652 € was recorded, the highest turnover recorded, representing 16% of tourism turnover (Table 3), followed by a continuous decrease until 2020, of 111,682,447 €, representing -92%. In 2021, this business area had an increase to 14,076,795 €. The areas with the lowest tourism turnover values are Camping grounds, recreational vehicle parks and trailer parks, Museums activities, Operation of historical sites and

buildings and similar visitor attractions and Botanical and zoological gardens and nature reserves activities, where turnover did not exceed 15,000,000 €, the shares of these in the tourism sector being between 0% and 0.9%.

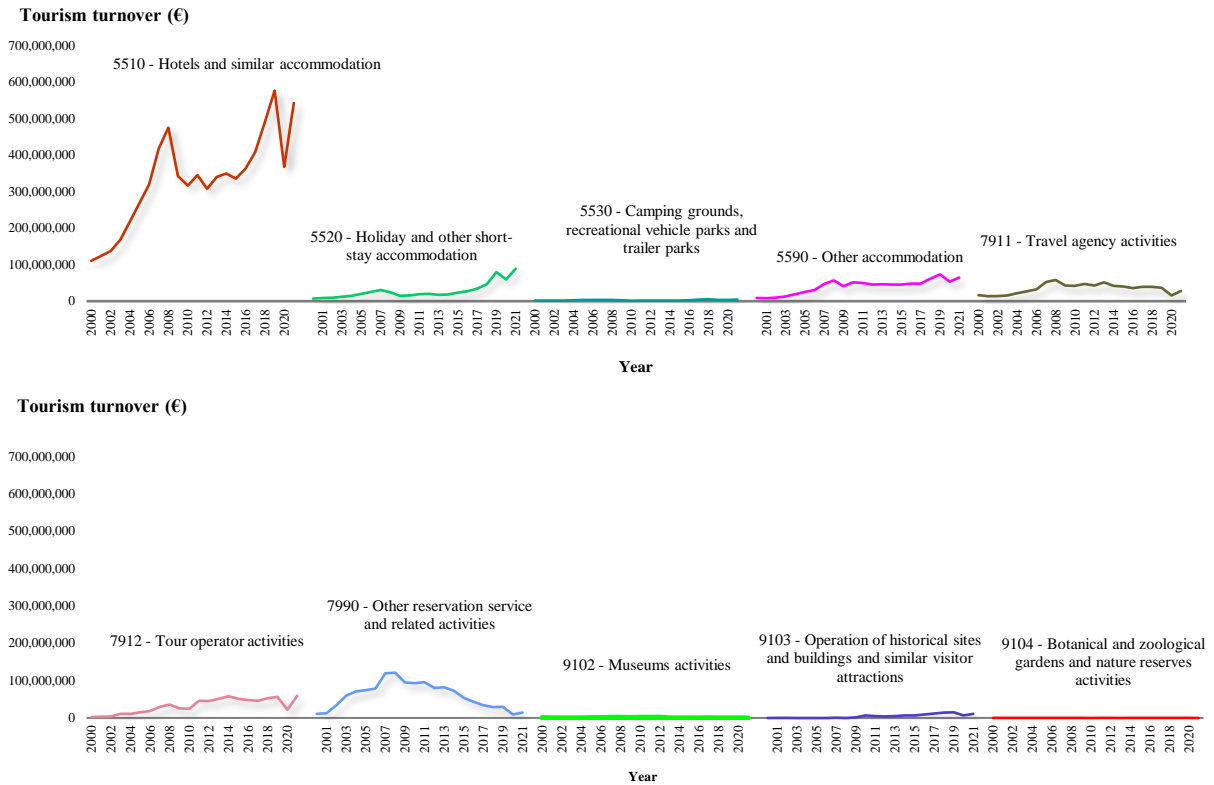


Figure 4. Evolution of turnover by NACE codes in the tourism sector in tourist resorts from 2000 to 2021

Data source: project UB/1365

Table 3. Evolution of the share of turnover by NACE codes in tourism in tourist resorts between 2000 and 2021

Year/resort	5510 - Hotels and similar accommodation	5520 - Holiday and other short-stay accommodation	5530 - Camping grounds, recreational vehicle parks and trailer parks	5590 - Other accommodation	7911 - Travel agency activities	7912 - Tour operator activities	7990 - Other reservation service and related activities	9102 - Museums activities	9103 - Operation of historical sites and buildings and similar visitor attractions	9104 - Botanical and zoological gardens and nature reserves activities
2000	70.30	4.56	0.86	5.62	10.31	1.56	6.69	0.08	0.01	0.00
2001	72.23	4.95	0.76	4.79	8.06	1.96	7.18	0.07	0.00	0.00
2002	65.37	4.69	0.65	4.50	6.83	1.83	16.08	0.06	0.00	0.00
2003	59.59	4.34	0.70	4.78	5.67	3.88	21.00	0.04	0.00	0.00
2004	60.91	4.14	0.70	5.39	6.09	2.93	19.80	0.04	0.00	0.00
2005	67.86	5.12	0.80	6.30	6.80	3.71	17.20	0.11	0.01	0.00
2006	62.68	5.04	0.76	6.00	6.29	3.72	15.37	0.14	0.01	0.00
2007	59.43	4.39	0.53	6.72	7.49	4.19	17.05	0.18	0.03	0.00
2008	61.17	3.19	0.41	7.38	7.48	4.58	15.56	0.22	0.01	0.00
2009	60.54	2.59	0.38	7.32	7.59	4.44	16.72	0.14	0.27	0.00
2010	57.31	2.87	0.22	9.41	7.57	4.43	16.86	0.21	1.12	0.00
2011	56.43	3.08	0.25	8.21	7.75	7.59	15.65	0.27	0.76	0.00
2012	55.97	3.65	0.32	8.26	7.81	8.27	14.63	0.31	0.78	0.00
2013	57.10	3.00	0.36	7.77	8.65	8.58	13.72	0.01	0.82	0.00
2014	58.85	3.13	0.27	7.63	7.07	9.75	12.20	0.00	1.09	0.00
2015	60.16	4.16	0.37	8.21	7.20	9.16	9.54	0.01	1.20	0.00
2016	63.00	4.68	0.40	8.29	6.23	8.32	7.49	0.00	1.58	0.00
2017	65.26	5.47	0.69	7.70	6.27	7.40	5.39	0.00	1.81	0.00
2018	66.51	6.22	0.71	8.28	5.36	7.12	3.92	0.00	1.87	0.00
2019	66.22	9.14	0.38	8.43	4.23	6.47	3.40	0.01	1.72	0.00
2020	68.23	11.08	0.69	9.95	2.99	4.13	1.71	0.01	1.20	0.00
2021	66.81	10.92	0.54	7.99	3.45	7.27	1.73	0.00	1.29	0.00



The evolution of the total number of employees in Romanian tourist resorts is relatively constant, with increases and decreases throughout the period under analysis. The global economic crisis caused the number of employees to decrease in 2010 by 18%, - 118,094 employees (Figure 5). The share of the tourism sector in this decrease was 1%.

During the pandemic period, the number of employees decreased from 2019 to 2021 by 61,975, a percentage decrease of -11%.

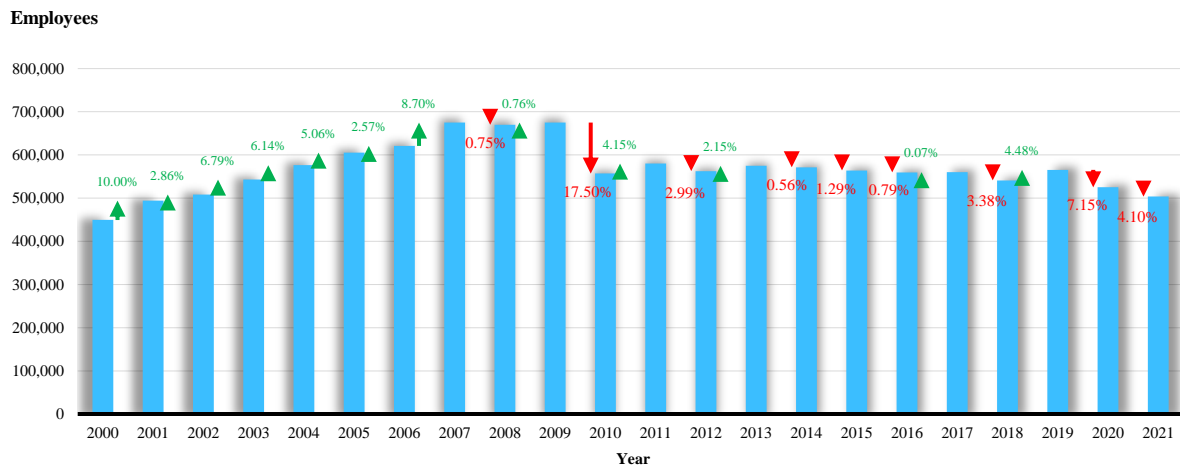
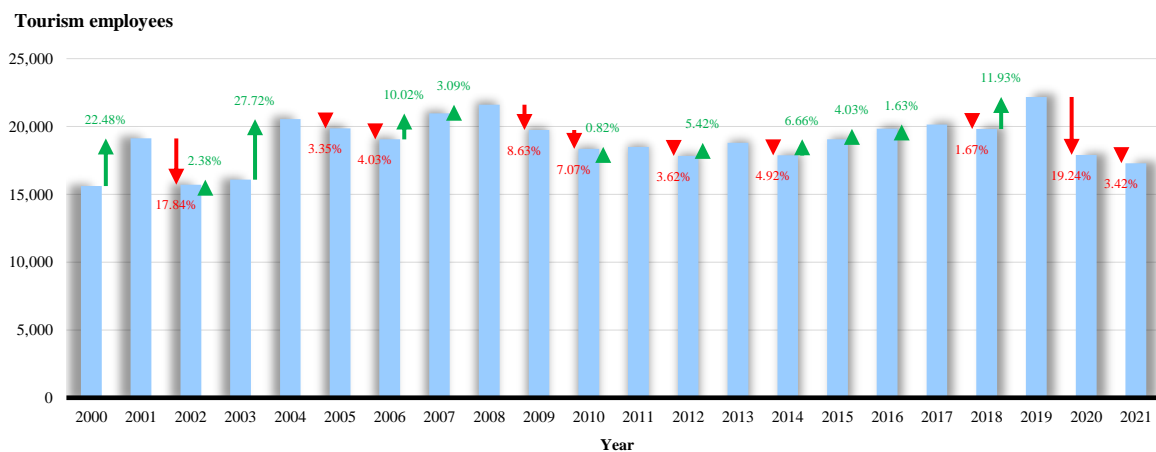
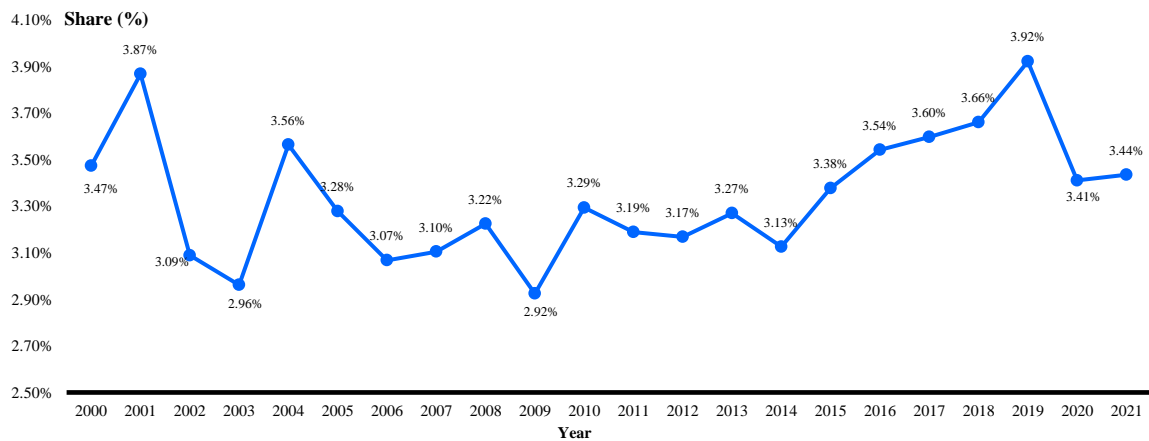


Figure 5. Evolution of the number of employees in tourist resorts between 2000 and 2021

Data source: project UB/1365

As with the total number of employees in resorts, the number of employees in the tourism sector shows a relatively constant evolution, with fluctuations in values (Figure 6). The largest increases in the number of employees in tourism were recorded in 2001 (+22%), 2004 (+28%) and 2019 (+12%). The pandemic period has caused the number of employees in this sector to fall quite sharply, from 22,173 employees in 2019 to 17,295 in 2021, a drop of about 22%. The shares of this indicator in the total local economy did not exceed 4% in the 22 years analyzed, with the highest shares in 2001 at 3.87%, 2004 at 3.56% and 2019 at 3.92% (Figure 6).

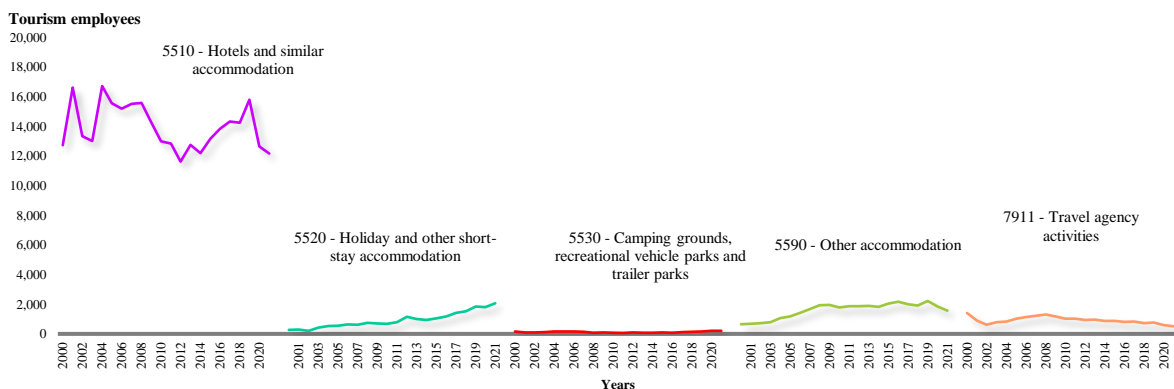


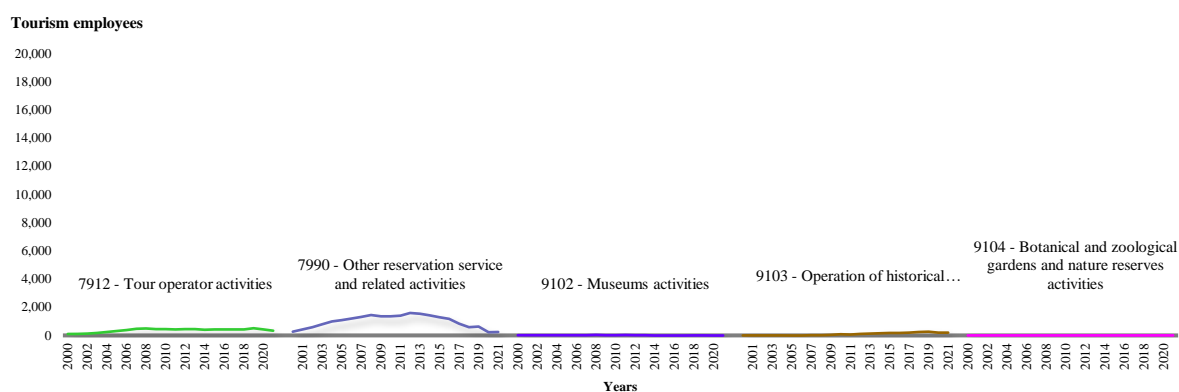


**Figure 6.** Evolution of the number of tourism employees and the share of tourism employees in the total number of employees in tourist resorts between 2000 and 2021

Data source: project UB/1365

From the analysis of the number of employees by sector of activity in the tourism sector (Figure 7), we observe that the sector concentrating the most employees is Hotels and similar accommodation, with a share of more than 65% throughout the analysis period (Table 4). Its evolution is a fluctuating one, with significant decreases in the period 2008 - 2012, when the number of employees working in hotels and similar accommodation went from 15,567 to 11,615 (-25%) and the period 2019 - 2021 (pandemic period), when the number of employees decreased by 3,625. Holiday and other short-stay accommodation has seen continued growth in the number of employees, with 2021 being the highest year at 2,064, an increase from the first year of analysis of 645%. Another sector with a number of employees above the 1,000 threshold after 2004 and with a share between 4% and 11% is Other accommodation. The field of activity which is present in only three tourist resorts (Poiana Brasov - Brasov county, Harghita Băi - Harghita county and Zetea - Harghita county) and which registered only one employee in 2013 (in Poiana Brasov resort), 2019 and 2020 (in Harghita-Băi resort), is Botanical and zoological gardens and nature reserves activities.





**Figure 7.** Evolution of employees by NACE codes in the tourism sector in tourist resorts between 2000 and 2021

Data source: project UB/1365

**Table 4.** Evolution of the share of the number of employees by NACE codes in tourism in tourist resorts between 2000 and 2021

Year/resort	5510 - Hotels and similar accommodation	5520 - Holiday and other short-stay accommodation	5530 - Camping grounds, recreational vehicle parks and trailer parks	5590 - Other accommodation	7911 - Travel agency activities	7912 - Tour operator activities	7990 - Other reservation service and related activities	9102 - Museums activities	9103 - Operation of historical sites and buildings and similar visitor attractions	9104 - Botanical and zoological gardens and nature reserves activities
2000	81.49	1.77	1.03	4.17	9.01	0.65	1.72	0.16	0.00	0.00
2001	86.93	1.49	0.53	3.51	4.64	0.55	2.28	0.08	0.00	0.00
2002	84.89	1.30	0.68	4.60	3.94	0.80	3.72	0.06	0.00	0.00
2003	80.83	2.57	0.80	4.83	4.86	1.10	4.93	0.06	0.00	0.00
2004	81.36	2.55	0.79	5.23	4.06	1.18	4.80	0.03	0.00	0.00
2005	78.29	2.77	0.78	5.92	5.20	1.56	5.44	0.05	0.01	0.00
2006	75.48	3.13	0.77	7.02	5.65	1.89	5.95	0.10	0.00	0.00
2007	73.94	2.98	0.65	8.00	5.80	2.24	6.28	0.08	0.03	0.00
2008	72.06	3.49	0.38	8.93	6.04	2.26	6.67	0.13	0.04	0.00
2009	71.14	3.52	0.44	9.76	5.81	2.24	6.72	0.12	0.24	0.00
2010	70.42	3.72	0.39	9.65	5.53	2.38	7.34	0.12	0.43	0.00
2011	69.33	4.28	0.33	10.08	5.58	2.31	7.55	0.16	0.37	0.00
2012	65.16	6.52	0.52	10.42	5.27	2.49	8.92	0.13	0.57	0.00
2013	67.83	5.31	0.41	10.06	5.14	2.35	8.22	0.04	0.64	0.01
2014	68.17	5.30	0.45	10.24	4.84	2.21	7.90	0.01	0.88	0.00
2015	68.97	5.47	0.47	10.70	4.55	2.19	6.74	0.01	0.90	0.00
2016	69.76	5.96	0.38	10.90	4.08	2.12	5.88	0.01	0.92	0.00
2017	71.11	7.03	0.58	9.88	4.15	2.11	4.11	0.00	1.02	0.00
2018	71.90	7.71	0.71	9.65	3.70	2.16	2.98	0.00	1.19	0.00
2019	71.24	8.28	0.69	10.01	3.43	2.29	2.87	0.00	1.19	0.00
2020	70.55	10.05	1.16	10.26	3.28	2.31	1.26	0.01	1.11	0.01
2021	70.37	11.93	1.19	9.08	2.95	1.87	1.42	0.01	1.17	0.00

Data source: project UB/1365

The trend matrix for tourist resorts in Romania, regarding the evolution of the share of tourism turnover in the total economy for the period 2000 - 2021, shows a predominance of resorts with a relatively constant evolution (shades of yellow/orange), whose values have not changed much and a decreasing evolution or extremely low values (shades of red). There are tourist resorts where the tourism sector has extremely small shares in the total local economy, such as: Pecica - with values of only 0.1% in 3 years out of the 21 analysed, Stei - values of 0.1% and 0.2%, Săcuieni, Tinca, Lacul Sărat, Tulucești, Carei, Negrești-Oaș, Sânnicolau Mare, Calacea, etc. However, there are also tourist resorts that do not register turnover values in the tourism sector: Jucu, Bala, Livada and Jimbolia. Tourist resorts such as Moneasa, Predeal/Pârâul Rece/Timișul de Sus, Bran, Băile Herculane, Trei Ape, Băile Tușnad, Sinaia, Călimănești-Căciulata, Băile Olănești, are among the resorts with the highest share of tourism turnover in total turnover, this being an important sector in the local economy.

**Table 5.** Trend matrix of the share of tourism turnover in total turnover from 2000 to 2021

Tourism resorts/years	2000	2001	2002	2003	2004	2005	2006	2007	2008	2009	2010	2011	2012	2013	2014	2015	2016	2017	2018	2019	2020	2021
Albac	1.2	0.0	0.0	0.0	3.3	7.4	10.0	13.3	11.8	8.4	6.8	3.7	2.7	2.7	3.7	2.6	2.9	4.3	4.0	8.4	10.1	14.1
Arieșeni	0.0	0.1	20.2	17.5	11.5	8.1	6.2	14.0	13.4	11.1	37.8	44.1	34.2	37.6	21.8	14.0	14.5	17.8	37.5	20.8	17.7	19.9
Lipova	1.7	1.3	1.1	1.3	1.3	1.5	1.7	1.4	1.5	1.6	1.3	0.8	0.7	0.6	0.5	0.7	0.4	0.3	0.3	0.3	0.1	0.0
Ghiococ	0.0	0.0	0.0	0.1	2.0	1.2	0.6	0.8	2.2	1.5	3.7	3.2	5.6	2.4	0.9	0.8	0.3	0.5	0.9	0.3	0.4	0.0
Moneasa	21.3	54.2	73.2	47.3	42.8	20.2	14.4	50.4	47.4	47.9	51.0	42.6	33.2	22.8	30.1	38.0	41.9	37.9	37.7	45.1	32.5	37.0
Pecica	0.0	0.0	0.0	0.0	0.0	0.0	0.0	0.0	0.0	0.0	0.0	0.0	0.0	0.1	0.1	0.1	0.1	0.0	0.0	0.0	0.0	0.0
Albeștii de Muscel	0.0	0.0	0.0	0.0	0.0	2.3	3.7	1.8	6.6	23.7	52.6	34.3	20.6	27.7	23.5	26.6	34.1	36.6	33.7	23.7	13.0	14.0
Dâmbovicioara	0.0	0.0	0.0	0.0	0.0	0.0	0.0	1.2	0.8	1.1	2.6	4.3	4.4	15.8	10.3	37.5	34.2	30.7	24.1	14.7	16.7	16.0
Moinești Băi Area	1.0	0.5	0.2	0.1	0.9	0.8	0.7	0.8	0.7	0.6	0.8	0.9	0.3	0.1	0.2	0.2	0.2	1.5	1.2	2.0	1.5	1.9
Slănic-Moldova	8.3	6.9	30.7	7.4	23.8	30.7	35.5	52.7	36.9	14.7	30.4	58.2	24.5	12.0	14.5	11.8	22.0	38.5	38.3	31.9	30.1	41.5
Târgu Ocna	8.9	6.2	3.6	3.7	2.6	2.8	3.0	3.3	3.8	4.7	5.6	6.7	6.2	5.7	6.1	5.7	6.4	6.5	6.7	9.2	6.7	7.0
Tourist area historical center -- Coridorul Crișul Repede	0.6	0.6	0.5	0.5	0.5	0.5	0.5	0.5	0.4	0.6	0.5	0.6	0.7	0.6	0.6	0.6	0.6	0.6	0.5	0.6	0.3	0.3
Băile Felix/1 Mai	31.3	33.5	32.2	31.9	28.8	24.6	22.0	21.6	22.9	22.4	20.9	21.5	5.7	16.7	15.0	17.0	20.6	18.3	20.8	21.0	14.6	16.3
Beiuș	0.2	0.2	0.4	0.4	0.3	0.9	1.3	0.5	0.5	0.3	0.3	0.3	0.3	0.4	0.5	0.5	0.5	0.5	0.6	0.5	0.3	0.4
Ștei	0.0	0.0	0.0	0.0	0.0	0.0	0.0	0.0	0.0	0.0	0.0	0.1	0.1	0.1	0.1	0.0	0.0	0.0	0.1	0.2	0.2	0.0
Marghita	0.4	0.3	0.3	0.3	0.3	0.4	0.4	0.5	0.5	0.4	0.4	0.4	0.4	0.3	0.3	0.2	0.2	0.3	0.3	0.3	0.2	0.2
Salonta	1.1	1.2	1.1	0.6	0.4	0.5	0.5	0.3	0.3	0.3	0.2	0.3	0.3	0.3	0.2	0.3	0.3	0.3	0.2	0.2	0.2	0.2
Tourist area of Borș commune	0.0	0.0	0.0	0.3	0.7	0.6	0.6	0.1	0.4	0.3	0.1	0.2	0.1	0.1	0.1	0.1	0.1	0.1	0.1	0.2	0.2	0.2
Stăna de Vale	71.0	16.0	7.0	4.5	1.3	1.2	1.1	0.7	1.6	0.7	10.4	13.0	14.1	3.1	0.3	1.1	1.8	0.1	0.1	0.0	0.1	0.0
Mădăraș	30.9	29.2	13.1	7.3	4.0	3.7	3.7	2.0	2.1	1.9	1.4	0.7	0.4	0.5	0.4	0.4	0.4	0.4	0.7	0.7	0.3	0.1
Săcueni	0.0	0.1	0.2	0.6	0.1	0.1	0.1	0.1	0.0	0.2	0.3	0.1	0.1	0.0	0.0	0.0	0.0	0.0	0.0	0.1	0.1	0.1
Timca	0.0	0.0	0.0	0.0	0.0	0.0	0.0	0.0	0.0	0.0	0.0	0.0	0.0	0.0	0.0	0.0	0.0	0.0	0.0	0.2	0.0	0.0
Vadu Crișului	0.0	0.0	0.2	0.1	0.5	0.9	1.1	0.3	2.7	0.8	0.5	1.2	1.2	1.2	0.8	1.0	1.9	0.8	0.7	0.8	0.5	0.5
Băile Figa Recreation Area - Beclean city	0.4	0.2	0.6	0.1	0.0	0.5	0.8	0.3	0.2	0.1	0.1	0.1	0.0	0.0	0.2	0.3	0.4	0.5	0.4	0.1	0.1	0.1
Săngeorz-Băi	24.5	26.9	25.5	21.4	14.5	15.8	16.6	13.4	9.2	4.5	1.6	1.3	0.6	3.4	4.3	6.0	6.3	5.3	4.5	5.3	1.5	3.3
Colibița	0.0	0.0	0.0	0.0	0.0	0.0	0.0	0.0	0.2	0.9	1.0	0.7	0.9	1.0	1.1	1.7	2.2	5.6	10.8	13.0	15.2	20.3
Rodna	0.0	0.0	0.0	0.0	0.0	9.3	13.4	13.4	0.0	12.1	12.8	8.5	7.4	6.5	7.4	9.5	9.1	7.2	8.0	5.6	4.9	6.4
Poiana Brașov	1.8	1.6	1.3	1.3	1.3	1.4	1.4	1.6	1.6	1.5	1.5	1.2	1.1	1.3	1.3	1.1	1.0	1.2	1.2	1.4	0.7	1.1
Predeal/Pârâul Rece/Timișu de Sus	35.3	34.1	23.6	21.4	18.8	19.6	20.2	20.4	19.6	18.9	21.1	31.4	33.7	31.4	30.0	17.9	14.4	25.6	30.6	39.9	32.9	34.0
Râșnov	0.9	0.7	1.0	1.4	1.4	1.1	1.0	1.8	2.6	1.6	1.5	3.0	2.7	4.6	1.5	1.6	1.8	2.1	2.0	2.1	1.2	2.9
Săcele	0.3	0.3	0.2	0.3	0.2	0.2	0.2	0.3	0.6	1.4	0.6	1.2	2.4	2.3	2.2	2.0	2.1	2.9	3.0	3.0	0.9	1.1
Bran	2.6	3.6	4.1	7.1	4.6	7.1	8.4	11.0	13.7	24.1	29.7	27.9	30.2	31.2	25.9	29.7	35.5	34.3	37.3	34.4	19.9	17.5
Moieciu	0.6	1.9	3.6	6.0	10.7	8.1	6.2	6.7	5.4	10.4	12.0	13.0	12.4	11.3	13.1	16.2	12.5	29.1	29.1	20.5	13.7	12.5
Vama Buzăului	0.0	4.7	12.2	15.5	10.9	11.1	11.3	10.8	9.2	2.9	0.0	0.0	0.0	0.0	0.1	0.0	0.3	1.3	2.0	3.1	0.0	0.1
Lacul Sărat	0.2	0.3	0.3	0.4	0.3	0.3	0.4	0.3	0.2	0.7	0.6	0.6	0.6	0.5	0.5	0.3	0.4	0.3	0.3	0.4	0.5	0.4
Sărata Monteoru	4.2	3.8	3.7	3.0	1.3	1.4	1.5	2.2	2.4	2.2	1.3	1.3	1.8	4.0	5.2	3.5	3.8	3.8	4.6	3.1	2.1	2.5
Gura Sîrului	0.0	0.0	0.0	0.0	0.0	0.0	0.0	0.0	0.0	0.1	0.1	0.2	0.1	2.4	1.5	4.6	7.2	8.9	8.1	7.7	10.4	15.2
Secu	0.5	0.4	0.5	0.4	0.4	0.3	0.3	0.3	0.2	0.4	0.2	0.2	0.2	0.3	0.4	0.7	0.7	0.5	0.6	0.9	0.5	0.7
Aniina	0.0	0.0	0.0	0.0	0.0	0.3	0.7	0.4	0.0	0.0	0.0	0.0	0.0	0.1	0.5	0.1	0.1	0.1	0.2	0.8	0.7	10.3
Băile Herculane	46.1	46.0	53.5	52.3	41.1	34.7	31.7	24.0	16.7	9.8	13.0	10.2	15.4	20.7	13.3	18.0	24.7	25.8	32.0	32.1	32.5	28.1
Berzasca	0.0	0.0	0.0	0.0	0.0	0.5	0.9	3.1	3.1	3.4	0.0	0.0	0.1	5.2	4.4	12.0	15.4	20.1	23.4	25.9	26.5	24.4
Trei Ape	10.4	99.5	60.3	39.7	29.7	43.7	51.4	76.7	71.3	71.5	74.4	24.0	19.2	56.8	71.1	60.8	42.3	55.5	37.1	38.3	39.0	52.5
Mehadia	0.5	1.8	14.8	10.5	9.2	7.6	6.5	3.9	2.5	2.8	0.5	2.1	0.3	0.3	3.3	4.7	1.6	3.8	1.6	5.0	2.0	3.8

Tourism resorts/years	2000	2001	2002	2003	2004	2005	2006	2007	2008	2009	2010	2011	2012	2013	2014	2015	2016	2017	2018	2019	2020	2021
Coronini	0.0	0.0	0.0	0.0	0.0	0.0	0.0	0.0	0.0	0.0	0.0	0.0	0.0	3.1	14.2	11.6	8.6	13.8	0.8	1.2	7.3	9.1
Borlova Area - Muntele Mic, Turnu Ruieni commune	1.5	2.3	3.6	4.9	0.3	7.1	9.6	11.9	5.9	3.5	2.1	2.3	2.2	2.6	1.1	2.0	2.2	2.0	3.6	4.7	2.6	2.7
Crivaia/Semenic	0.0	0.0	4.8	11.5	17.7	47.2	60.0	32.8	41.8	46.2	53.4	57.8	59.2	47.3	8.4	8.5	10.9	11.6	9.7	10.2	6.8	8.1
Băile Ocna Dej Area (Dej municipality)	0.7	1.1	1.1	1.2	1.4	0.8	0.4	0.3	0.2	0.2	0.2	0.3	0.2	0.3	0.2	0.5	0.5	0.7	0.6	0.5	0.2	0.3
Băile Turda	3.3	2.7	2.3	2.6	3.0	2.6	2.5	2.4	1.7	1.3	1.9	1.6	1.8	2.0	2.2	2.2	2.1	2.4	2.3	2.3	1.1	1.5
Băile Băia	0.6	0.6	0.7	0.8	0.9	1.0	1.1	1.6	2.2	1.1	1.2	1.1	0.9	0.9	0.8	0.9	0.8	1.2	1.3	1.2	1.1	1.1
Muntele Băişorii Area	8.4	0.0	5.3	1.2	2.7	5.2	10.6	12.1	9.7	14.3	12.5	9.9	3.3	3.8	4.0	13.0	22.3	11.6	10.1	9.7	6.1	15.8
Jucu	0.0	0.0	0.0	0.0	0.0	0.0	0.0	0.0	0.0	0.0	0.0	0.0	0.0	0.0	0.0	0.0	0.0	0.0	0.0	0.0	0.0	0.0
Fântânele Area	0.0	0.0	0.0	0.0	0.0	0.0	0.0	2.6	0.4	4.0	0.0	0.0	0.0	0.0	0.0	0.0	0.0	0.0	0.0	0.3	0.1	1.0
Mamaia	2.2	1.9	1.6	1.6	1.4	1.4	1.4	1.3	1.3	1.2	1.7	1.5	1.7	1.8	2.0	1.7	1.8	1.8	2.0	2.0	1.6	1.9
North Eforie/ South Eforie	30.4	33.4	24.3	24.1	17.7	13.4	11.2	11.6	9.7	11.6	8.2	7.5	6.4	10.8	17.3	20.3	19.8	14.5	17.2	20.0	18.2	18.8
Mangalia (Cap Aurora, Jupiter, Neptun-Olimp, Saturn, Venus)	12.9	14.3	10.2	8.8	12.6	9.9	8.3	6.5	5.3	5.0	3.3	4.0	5.4	6.0	6.5	4.8	5.4	9.3	21.4	22.7	23.0	25.5
Mamaia North Area	0.0	0.1	0.0	0.0	0.0	0.0	0.1	0.1	0.1	0.1	0.1	0.1	0.3	0.6	1.0	0.1	0.2	0.2	0.3	0.4	0.5	0.4
Techirghiol	3.2	3.9	3.5	4.1	2.9	3.2	3.3	5.3	6.3	4.5	0.9	0.6	0.9	3.2	3.2	3.0	3.3	1.9	1.9	4.1	4.6	4.0
Costeşti	41.6	41.5	40.3	39.7	34.8	28.5	24.8	17.4	21.7	22.6	18.7	17.3	16.4	13.4	10.9	10.3	9.8	9.9	8.8	8.7	4.7	10.3
Covasna	10.7	10.9	9.5	10.5	9.1	7.9	7.1	7.3	10.0	8.8	9.7	10.2	11.9	11.7	9.8	10.6	10.6	12.1	14.6	14.6	7.4	9.5
Balványos	4.6	4.6	3.6	0.0	5.3	2.0	0.0	4.6	0.0	4.7	3.5	3.5	2.9	2.8	2.7	3.7	3.9	3.8	3.6	5.2	3.8	4.7
Pucioasa	3.9	3.0	1.3	1.1	0.9	1.1	1.3	1.2	1.3	1.5	1.5	1.3	1.1	0.9	0.8	0.0	0.6	0.6	0.6	0.4	0.1	0.2
Peştera - Padina Area	1.7	1.3	1.0	1.1	1.5	1.1	1.0	0.8	0.9	1.8	2.5	2.1	4.6	4.9	6.3	8.4	12.6	12.7	12.2	13.2	7.8	10.0
Tuluceşti	0.0	0.0	0.0	0.0	0.0	0.0	0.0	0.0	0.0	0.1	0.0	0.0	0.0	0.0	0.0	0.0	0.0	0.0	0.0	0.0	0.1	0.1
Novaci	0.1	0.1	0.0	0.1	0.0	0.1	0.2	0.1	0.1	0.1	0.1	0.2	0.1	0.0	0.1	0.3	0.3	0.5	0.3	0.4	0.7	0.7
Baia de Fier	0.9	0.8	0.8	0.8	0.7	4.9	6.6	5.3	3.6	3.5	3.0	4.6	3.3	6.7	5.1	2.2	1.9	1.7	1.8	1.8	2.2	2.2
Peştişani	0.0	0.0	0.0	0.0	0.0	0.0	0.0	0.0	0.0	0.0	0.2	1.3	1.8	1.5	0.8	1.3	0.5	0.6	0.9	1.1	1.3	0.8
Polovragi	12.1	9.1	3.3	4.9	2.3	1.0	0.5	0.2	0.0	0.0	0.0	0.0	0.0	0.1	0.0	0.1	0.2	1.5	1.2	3.5	3.4	2.4
Săcelu	23.1	22.1	9.4	12.7	11.4	3.9	1.0	1.7	0.4	0.5	1.2	0.3	0.4	0.0	7.0	0.0	0.0	0.0	0.0	1.9	1.6	0.8
Harghita-Băi	0.6	0.8	1.1	1.1	0.8	0.7	0.6	0.5	0.6	0.6	0.5	0.5	0.5	0.4	0.6	0.6	0.5	0.5	0.5	0.6	0.3	0.7
Băile Tuşnad	77.0	80.2	74.7	70.4	68.3	66.0	64.6	62.1	50.0	44.3	34.2	39.7	45.9	52.2	48.9	51.8	53.1	54.8	57.3	55.1	50.0	61.9
Borsec	4.6	4.2	5.9	4.0	5.0	5.9	6.5	5.1	0.3	0.3	0.4	0.3	0.3	0.3	0.3	0.2	0.1	0.1	0.1	0.3	0.2	0.2
Lacu Roşu	1.1	0.4	0.8	0.9	0.7	0.9	1.1	1.3	1.2	1.5	1.0	1.3	1.3	1.1	1.3	1.6	1.7	1.9	1.5	1.8	1.3	1.3
Băile Banffy Area (Topliţa municipality)	2.6	0.8	0.4	0.4	0.5	0.4	0.4	0.3	0.3	0.3	0.2	0.1	0.2	0.3	0.3	0.4	0.7	0.6	1.5	1.7	1.6	2.0
Băile Homorod	0.2	0.9	1.0	1.0	1.3	1.2	1.2	1.6	1.5	1.8	1.4	0.9	1.0	0.9	1.7	1.1	1.6	1.0	2.2	2.3	2.0	2.2
Corund	0.0	0.0	0.0	0.0	0.0	0.0	0.0	0.7	0.2	0.2	1.0	0.0	0.1	0.0	0.0	0.0	0.2	0.6	0.7	0.7	0.5	1.5
Praid	18.3	20.3	22.1	17.9	18.2	16.5	15.7	13.7	10.7	10.4	10.0	11.0	6.8	6.0	6.1	7.7	9.0	10.1	12.1	15.2	7.9	7.9
Izvoru Mureşului	0.0	0.0	0.0	0.1	0.1	0.1	0.1	0.1	0.1	0.4	0.5	0.8	1.2	0.1	0.4	0.5	0.4	0.4	0.7	0.3	0.2	0.2
Zetea	0.0	0.0	0.1	0.0	0.2	0.5	0.6	0.7	0.7	1.1	1.5	1.1	0.9	1.4	1.3	4.3	4.5	1.7	3.6	4.3	2.4	4.0
Zona Parâng - Petroşani	0.9	1.9	1.5	1.4	0.9	0.6	0.4	0.3	0.3	0.3	0.4	0.6	0.4	0.6	0.7	0.9	1.3	1.1	1.6	6.5	1.6	2.3
Straja	0.4	0.2	0.3	0.4	0.3	0.6	0.8	0.5	0.4	0.5	1.0	1.4	1.1	0.8	0.7	0.4	0.5	0.6	0.7	1.3	1.5	3.0
Uricani	0.0	0.0	0.0	0.0	0.0	0.1	0.1	0.0	0.3	0.2	0.4	0.4	0.7	0.5	0.6	0.5	0.3	0.3	0.3	0.2	0.2	0.3
Geoagiu-Băi	36.3	42.8	36.7	32.4	21.7	17.2	14.6	18.1	23.3	20.1	18.9	18.1	14.7	14.5	15.1	15.8	16.4	11.6	14.1	15.5	5.9	8.7
Văja de Jos	0.6	0.6	0.5	0.5	0.6	0.3	0.2	0.2	0.6	1.0	0.6	0.7	1.1	1.4	1.7	1.1	0.1	0.0	0.1	0.3	6.8	0.0
Amara	4.5	4.9	4.3	4.9	5.3	7.9	9.8	5.9	6.6	5.9	4.6	2.8	3.1	5.1	6.6	8.0	6.9	7.8	8.1	9.7	6.9	6.6
Snagov	2.7	2.6	0.1	0.0	0.0	0.5	0.8	2.8	3.6	0.7	1.3	1.2	1.1	1.4	1.6	2.2	1.8	1.3	1.7	1.3	1.3	0.9
Tăuţii-Măgherauş	0.0	0.0	0.0	0.3	0.0	0.3	0.5	0.4	0.2	0.1	0.1	0.1	0.0	0.0	0.0	0.0	0.0	0.0	0.0	0.0	0.0	0.0

Tourism resorts/years	2000	2001	2002	2003	2004	2005	2006	2007	2008	2009	2010	2011	2012	2013	2014	2015	2016	2017	2018	2019	2020	2021
Sighetu Marmatei	1.5	1.4	1.1	1.0	0.9	0.9	0.9	1.0	1.0	1.0	1.0	1.0	1.0	0.3	0.3	0.3	0.3	0.3	0.3	1.2	1.2	1.4
Șuitor-Baia Sprie Area	0.1	0.1	0.8	1.9	1.2	0.9	0.7	1.3	1.6	2.2	2.6	2.2	2.4	1.8	1.3	1.6	1.9	1.9	2.5	2.3	1.5	1.6
Borșa	6.2	5.3	4.4	4.9	5.6	6.4	6.9	5.9	6.3	6.1	3.3	3.2	3.6	2.9	1.8	5.6	3.0	3.3	3.3	3.7	3.9	4.9
Cavnic	1.5	1.5	1.5	1.3	1.8	1.7	1.6	5.1	1.2	0.8	1.0	0.9	0.7	0.4	0.7	0.7	0.3	0.5	1.8	1.0	1.0	0.7
Vișeu de Sus	3.4	2.8	3.7	1.7	1.5	1.3	1.2	1.4	1.4	1.4	1.4	1.6	1.6	1.8	2.4	3.1	4.3	5.0	5.1	5.8	2.0	5.2
Bârsana	0.0	0.0	0.0	0.0	0.0	0.1	0.1	0.2	0.2	0.4	1.2	1.5	0.4	0.7	0.8	0.4	0.3	0.2	0.4	0.5	0.2	0.2
Botiza	5.6	2.9	3.2	0.0	0.0	8.9	13.8	4.9	13.3	16.6	12.2	20.1	3.7	11.6	18.5	8.3	6.3	10.4	25.8	7.8	9.7	2.1
Moisei	0.0	0.0	0.0	0.0	0.0	0.0	0.0	0.0	0.0	0.3	1.9	1.3	0.7	0.5	0.0	0.0	0.0	0.1	0.2	1.9	1.4	0.9
Ocna Șugatag	0.0	0.0	0.1	0.5	0.7	4.7	7.7	10.7	8.9	8.6	5.0	6.5	10.2	12.6	13.7	14.4	18.9	20.9	25.6	21.7	16.6	16.7
Săpânța	18.1	14.1	5.6	4.0	1.4	1.2	1.2	0.5	2.4	4.4	2.7	4.6	5.4	4.6	4.1	5.6	4.6	6.8	7.9	14.0	17.9	17.7
Bala	0.0	0.0	0.0	0.0	0.0	0.0	0.0	0.0	0.0	0.0	0.0	0.0	0.0	0.0	0.0	0.0	0.0	0.0	0.0	0.0	0.0	0.0
Sângeorgiu de Mureș	1.0	0.6	0.4	0.4	0.5	0.7	0.8	1.3	2.2	3.0	2.7	2.4	2.4	2.9	2.6	2.9	3.1	3.1	3.4	3.5	2.4	2.6
Sovata	17.3	14.6	11.2	10.1	13.8	13.5	13.3	12.5	13.1	13.7	15.2	16.6	17.0	16.4	15.9	18.5	18.8	18.1	17.5	19.8	13.5	17.0
Tourist area of Piatra-Neamț municipality	1.0	0.9	0.8	0.8	0.9	0.9	0.9	0.8	1.0	1.1	1.1	1.1	1.4	1.8	1.5	1.7	2.0	2.1	2.4	2.4	1.1	2.2
Târgu-Neamț	0.3	0.6	0.4	0.7	0.5	0.7	0.8	0.8	1.6	1.3	0.9	1.0	1.0	0.4	0.3	0.6	0.5	0.7	0.7	0.8	0.8	0.5
Băljătești	0.0	0.0	0.0	0.0	0.0	0.0	0.0	0.1	0.3	0.5	0.3	0.9	1.0	0.7	0.5	0.2	0.1	0.0	0.0	0.1	0.0	0.0
Durău	13.9	1.7	12.5	16.0	21.1	16.9	14.8	10.8	14.8	16.4	21.1	14.2	20.2	16.1	21.6	27.0	21.6	10.9	10.0	10.9	14.8	10.9
Azuga	0.5	0.6	0.1	0.3	0.4	0.8	1.1	2.0	1.3	1.6	2.2	5.2	7.1	2.2	1.7	1.4	1.3	2.3	3.2	13.7	14.7	12.0
Breaza	6.2	5.4	3.4	2.8	1.8	1.6	1.4	1.3	1.2	1.2	1.0	0.9	0.8	1.1	0.6	0.0	0.0	0.4	0.5	0.7	0.4	1.2
Bușteni	29.2	26.4	23.1	17.9	16.5	14.7	13.4	9.1	7.5	6.7	3.1	5.5	6.7	6.0	5.3	6.4	5.6	3.1	3.8	3.1	2.6	2.9
Sinaia	10.4	10.6	10.4	11.7	12.5	13.8	14.5	14.5	14.4	12.1	14.9	17.3	22.9	22.4	23.1	29.1	31.3	33.0	34.6	34.3	23.7	27.7
Slănic Prahova	71.9	73.5	70.3	77.1	61.9	53.1	48.5	51.7	56.0	62.7	60.7	61.5	63.0	64.3	60.0	52.2	51.6	53.4	49.2	40.7	20.7	3.6
Vălenii de Munte	0.0	0.0	0.0	0.0	0.0	0.0	0.0	0.0	0.0	0.0	0.0	0.0	0.0	0.0	0.0	0.2	0.2	0.2	0.2	0.1	0.1	0.1
Cheia	0.3	1.9	1.6	1.4	1.5	1.3	1.2	1.1	1.9	3.0	7.4	13.7	13.8	16.2	17.9	3.2	3.1	3.0	3.0	2.3	2.8	2.9
Carei	0.1	0.1	0.1	0.1	0.0	0.1	0.1	0.1	0.1	0.1	0.0	0.0	0.0	0.2	0.1	0.0	0.0	0.0	0.0	0.0	0.0	0.0
Negrești-Oaș	0.0	0.0	0.0	0.0	0.0	0.1	0.1	0.1	0.1	0.1	0.0	0.0	0.0	0.0	0.0	0.0	0.0	0.1	0.1	0.2	0.2	0.2
Tâșnad	4.8	6.3	7.6	6.1	5.7	5.5	5.4	3.9	3.8	3.9	3.4	2.3	2.0	1.4	1.2	1.2	1.1	0.7	0.7	0.8	0.5	0.5
Livada	0.0	0.0	0.0	0.0	0.0	0.0	0.0	0.0	0.0	0.0	0.0	0.0	0.0	0.0	0.0	0.0	0.0	0.0	0.0	0.0	0.0	0.0
Vama	0.0	0.0	0.0	0.0	0.0	0.0	0.0	0.0	0.0	0.0	0.0	0.1	0.0	0.0	0.0	0.0	0.7	1.0	0.9	1.1	8.6	12.3
Păltiniș	3.7	3.4	5.9	7.2	6.1	3.1	1.4	4.2	3.5	3.8	3.4	3.0	2.9	2.9	2.5	2.0	2.1	1.3	1.4	1.1	0.4	0.5
Cisnădie	0.2	0.3	0.4	1.6	1.9	1.5	1.3	0.7	0.3	0.2	0.1	0.1	0.1	0.4	0.1	0.1	0.1	0.1	0.1	0.2	0.2	0.4
Ocna Sibiului	4.2	2.9	2.1	1.4	2.7	0.5	0.2	0.9	1.4	11.0	19.7	6.2	2.4	3.0	2.5	3.1	2.3	3.4	2.2	1.1	1.0	1.0
Bazna	0.0	0.0	0.0	0.0	0.0	0.1	0.2	0.9	1.6	1.4	1.0	1.3	1.2	1.1	7.8	11.9	12.6	14.3	15.1	16.5	8.1	12.7
Cârțișoara	0.0	0.0	0.0	0.0	0.0	0.0	0.0	0.0	0.0	0.0	0.0	0.0	0.0	33.9	3.3	0.6	2.9	3.4	9.3	16.5	20.7	17.3
Câmpulung Moldovenesc	2.9	2.6	2.8	1.6	2.7	2.3	2.0	2.0	1.9	2.2	2.1	1.7	1.9	1.5	1.3	1.8	1.6	2.1	2.9	2.3	1.6	2.8
Gura Humorului	4.3	4.2	4.9	7.4	7.7	6.0	4.9	4.8	3.8	3.5	3.1	3.0	1.6	2.0	1.9	2.4	2.2	3.3	4.2	5.4	5.6	7.2
Solca	0.0	0.0	0.0	0.0	0.8	1.2	1.4	2.6	1.2	0.5	1.2	0.7	1.1	0.3	5.4	36.1	35.1	30.7	30.2	7.3	1.4	3.0
Vatra Dornei	5.2	6.2	7.6	6.3	7.0	6.5	6.1	7.3	7.1	7.2	6.8	6.4	6.6	5.8	4.7	4.3	3.9	3.4	3.9	4.1	2.5	2.7
Cacica	0.0	0.0	0.0	0.0	0.0	0.0	0.0	0.0	0.0	0.1	0.3	0.3	0.3	1.3	0.9	0.9	0.9	1.0	1.4	2.8	2.1	2.5
Doma-Arini	0.9	0.0	0.0	0.0	1.0	3.2	5.0	3.4	4.5	6.0	7.6	1.9	2.2	3.8	5.2	3.9	6.1	0.6	1.3	4.8	4.4	6.3
Doma Candrenilor	0.0	0.0	0.0	0.0	0.0	0.0	0.0	0.0	0.2	0.6	0.6	0.5	0.6	0.2	0.7	1.1	1.0	0.7	0.7	0.7	0.4	5.2
Frumosu	0.0	0.0	0.0	0.2	0.9	1.8	2.7	2.8	4.4	1.2	0.5	0.1	0.2	0.0	0.0	0.0	0.0	0.0	0.0	0.0	0.0	0.0
Fundu Moldovei	0.0	0.0	0.0	0.4	0.4	0.8	1.1	2.2	2.3	3.0	2.7	2.5	1.9	1.2	0.7	0.9	0.4	0.4	0.4	0.3	12.7	12.4
Mălini	1.8	1.3	0.7	0.6	1.1	1.2	1.4	1.7	2.9	1.4	1.1	0.5	0.3	0.3	0.3	0.3	0.2	0.3	0.6	1.5	1.6	1.3
Moldovița	25.0	11.0	11.0	4.1	3.3	2.7	2.2	2.1	1.0	0.8	2.4	2.4	2.6	0.8	1.4	0.1	1.2	1.6	2.0	2.8	0.0	0.2

Tourism resorts/years	2000	2001	2002	2003	2004	2005	2006	2007	2008	2009	2010	2011	2012	2013	2014	2015	2016	2017	2018	2019	2020	2021
Panaci	0.0	0.0	0.0	0.0	0.0	0.0	0.0	0.0	0.0	2.4	4.9	8.2	4.6	6.7	5.0	0.7	1.0	2.8	2.2	1.2	2.3	1.3
Poiana Stampei	0.0	0.0	0.0	0.0	0.0	2.7	4.8	3.2	3.2	2.8	2.0	1.6	0.0	0.9	0.0	0.0	0.0	0.0	0.0	0.2	0.4	0.6
Pojorăta	0.5	0.4	0.8	1.0	1.1	1.3	1.5	1.6	1.7	1.4	1.3	1.3	1.2	1.3	1.0	1.3	1.4	1.5	1.4	1.6	1.1	1.3
Putna	3.3	3.2	2.8	2.4	3.4	4.3	4.9	10.6	6.4	9.3	11.4	10.8	13.4	5.9	5.6	3.4	3.9	2.4	1.5	2.2	1.7	1.7
Sadova	3.6	3.0	6.3	6.7	5.3	3.3	2.0	2.9	2.8	2.6	2.7	2.3	2.5	2.9	2.9	5.4	6.7	5.5	6.3	7.2	6.6	5.6
Sucevița	1.9	3.0	3.7	3.9	5.6	5.9	6.2	9.0	17.6	13.8	8.7	9.8	21.0	6.4	8.8	2.4	2.4	11.3	14.7	13.3	6.8	10.2
Șaru Dornei	0.0	0.0	0.0	0.0	3.8	2.1	0.6	0.0	0.4	0.5	4.2	2.4	0.9	1.1	4.8	7.7	4.5	5.6	7.8	8.1	6.6	6.4
Vama	0.9	0.7	2.4	2.1	2.5	2.0	1.7	2.4	3.1	1.9	2.4	1.4	1.6	0.7	1.1	1.0	1.2	1.3	1.6	1.9	1.3	1.4
Vatra Moldoviței	0.0	0.0	0.0	0.0	0.1	0.4	0.5	1.3	1.0	1.1	0.3	0.3	0.3	0.1	0.4	0.4	0.7	0.5	0.2	1.5	0.8	1.5
Buziaș	21.1	15.0	15.1	6.5	5.2	3.9	3.4	2.8	2.8	3.0	3.4	3.5	3.4	3.3	3.2	2.5	3.0	2.1	1.9	2.2	1.4	1.3
Deta	0.0	0.0	0.0	0.6	1.0	0.8	0.7	1.2	0.3	0.5	0.3	0.2	0.4	0.2	0.2	0.1	0.1	0.1	0.1	0.0	0.0	0.0
Jimbolia	0.0	0.0	0.0	0.0	0.0	0.0	0.0	0.0	0.0	0.0	0.0	0.0	0.0	0.0	0.0	0.0	0.0	0.0	0.0	0.0	0.0	0.0
Sânnicolau Mare	0.4	0.2	0.1	0.1	0.1	0.1	0.1	0.1	0.1	0.1	0.1	0.1	0.1	0.1	0.1	0.1	0.1	0.1	0.2	0.2	0.1	0.2
Călacea	0.0	0.0	0.0	0.0	0.0	0.0	0.0	0.0	0.1	0.1	0.1	0.1	0.0	0.0	0.0	0.0	0.0	0.0	0.1	0.2	0.0	0.0
Băile Govora	55.1	56.1	52.9	48.2	37.9	43.2	47.7	28.8	14.0	19.2	23.2	27.1	25.7	43.7	43.5	0.0	0.0	0.0	0.0	47.6	29.2	42.0
Băile Olănești	22.2	21.1	36.7	38.1	40.0	40.6	40.9	34.5	34.9	42.0	43.3	37.4	42.9	37.7	27.4	15.6	14.6	22.9	27.1	26.8	13.0	18.5
Brezoi	2.5	1.6	1.1	3.3	1.7	1.7	1.6	2.5	3.6	3.3	3.8	4.3	5.3	7.2	6.8	8.5	8.8	9.1	10.1	11.5	8.4	7.3
Călimănești-Căciulata	54.5	56.4	51.0	53.1	52.1	49.6	48.1	46.1	40.7	31.7	29.3	35.5	42.7	43.2	43.4	45.6	49.9	54.6	50.6	51.9	37.1	41.5
Horezu	4.8	4.7	3.8	4.7	4.0	2.8	2.2	2.1	2.3	2.6	2.7	2.1	2.2	1.8	1.3	1.3	1.6	2.0	2.6	1.8	1.4	0.9
Ocele Mari	0.0	1.6	10.9	16.0	18.4	14.8	12.8	11.8	8.3	26.2	30.5	11.0	21.6	1.8	1.7	6.0	1.5	0.0	0.0	3.4	3.4	4.0
Mălaia	0.0	0.0	0.0	0.2	0.9	1.8	2.3	4.3	4.3	4.4	2.8	2.7	1.9	1.1	0.7	0.6	1.2	1.4	2.0	3.2	3.8	2.5
Voineasa	0.6	0.0	0.0	0.0	0.6	1.9	2.5	2.6	3.5	3.7	1.9	2.2	0.9	0.9	2.5	3.3	2.6	1.4	1.6	2.3	1.8	2.3
Soveja	0.0	0.0	1.8	1.2	1.2	1.5	1.7	0.0	0.1	1.4	0.4	0.2	0.4	3.2	1.6	0.7	2.1	1.7	2.3	1.8	0.8	7.0
Oncești	0.0	0.0	0.0	0.0	0.0	0.1	0.1	0.0	0.0	0.1	0.2	0.2	0.1	0.1	0.1	0.1	0.7	1.0	1.8	1.6	1.2	1.6
Boghiș	0.0	0.0	0.0	0.0	0.0	0.0	0.0	0.0	0.1	0.6	1.0	0.6	2.1	6.9	12.8	4.9	4.2	3.3	5.4	0.4	0.1	0.1

Data source: project UB/1365

As in the case of the trend matrix of the share of turnover, the matrix on the share of the number of employees in tourism shows a predominance of tourist resorts with relatively constant trends (shades of yellow/orange) and decreasing trends or very low values (shades of red). Jucu (except for 2019), Tulucești and Bala are the resorts with no employees in tourism, and resorts such as Ștei (with peaks in 2019 and 2020 of 13 and 14 employees respectively, in the other years the number of employees was not more than 7), Marghita, Uricani, Vălenii de Munte, Carei, Negrești-Oaș, Jimbolia or Sânnicolau Mare, have a small number of employees working in this economic sector, their share being less than 1% of the total local economy.

The tourist resorts where the tourism sector is one of the main areas of activity, where a significant number of employees work, are: Moneasa (40% in 2021), Albești de Muscel (38% - 2021), Slănit Moldova (43% - 2021), Băile Felix/1 Mai (34% - 2021), Predeal/Pârâul Rece/Timișul de Sus (30% - 2021), Băile Herculane (35% - 2021), Trei Ape (33% - 2021), Băile Tușnad (56% - the highest percentage recorded în 2021), Călimănești-Căciulata (50% - the resort ranked second for the share of tourism employees în 2021).

**Table 6.** Trend matrix of the share of tourism employees in total employees between 2000 and 2021

Tourism resorts/years	2000	2001	2002	2003	2004	2005	2006	2007	2008	2009	2010	2011	2012	2013	2014	2015	2016	2017	2018	2019	2020	2021
Albac	5.9	0.0	0.0	0.0	5.6	10.2	15.2	17.2	13.0	12.0	7.9	8.6	3.7	3.8	3.4	5.7	4.8	8.6	10.6	11.9	14.3	19.8
Arieșeni	0.0	0.0	6.3	8.7	23.3	24.4	25.0	22.4	20.9	22.6	29.5	33.9	27.7	31.9	23.1	19.8	26.2	30.8	51.1	23.2	26.9	25.4
Lipova	1.9	2.1	1.9	2.1	1.7	2.4	2.4	2.2	2.2	2.8	2.6	2.2	2.4	2.2	2.0	1.9	1.8	1.4	1.2	1.0	0.9	0.0
Ghiococ	0.0	0.0	0.0	0.9	0.5	0.8	0.7	0.4	0.7	0.9	0.9	1.8	0.7	1.4	0.9	0.5	0.7	1.1	1.4	1.6	1.7	0.8
Moneasa	17.6	63.3	64.6	52.5	39.7	29.1	42.8	53.7	52.9	55.9	63.9	55.5	32.2	37.7	38.6	47.3	49.4	39.0	49.0	50.8	46.9	40.0
Pecica	0.0	0.0	0.0	0.0	0.0	0.0	0.0	0.0	0.0	0.0	0.0	0.0	0.1	0.2	0.2	0.2	0.1	0.0	0.0	0.0	0.0	0.0
Albeștii de Muscel	0.0	0.0	0.0	0.0	0.0	13.3	31.3	27.8	20.0	25.0	27.8	47.4	27.8	38.5	40.0	44.1	51.3	47.7	46.8	39.4	38.9	38.0
Dâmbovicioara	0.0	0.0	0.0	0.0	0.0	0.0	0.0	0.0	8.8	7.1	13.5	11.7	12.5	15.2	14.1	28.8	33.9	23.7	32.3	12.7	18.1	19.6
Moinești Băi Area	2.8	2.1	0.7	0.3	0.3	0.6	0.9	1.1	1.0	0.6	0.8	0.7	0.3	0.2	0.4	0.3	0.2	2.1	2.1	2.7	2.8	2.4
Slănic-Moldova	13.1	13.1	20.1	6.8	42.9	40.2	45.6	28.7	28.2	23.7	19.8	16.8	14.6	18.1	13.1	14.4	26.4	41.7	35.2	35.3	42.0	43.3
Târgu Ocna	4.4	4.3	4.0	5.5	6.0	7.3	4.9	4.6	5.1	6.7	6.4	6.2	6.2	6.1	6.2	6.7	7.9	9.5	10.6	11.9	10.6	9.0
Tourist area historical center - Coridorul Crișul Repede	0.6	0.7	0.7	0.8	0.8	0.9	0.9	1.0	1.0	1.1	1.1	1.0	1.1	1.1	1.0	1.1	1.1	1.1	0.9	1.1	1.0	0.9
Băile Felix/1 Mai	56.3	52.8	52.6	54.1	49.2	47.2	39.7	41.5	39.5	41.8	43.4	40.1	15.4	36.5	37.2	39.0	42.0	39.0	39.6	39.1	37.9	34.1
Beiuș	0.7	0.6	0.6	1.0	0.8	0.9	1.3	1.0	1.1	0.8	1.1	1.0	0.6	0.6	0.7	0.9	0.9	0.9	1.3	1.4	1.3	1.2
Ștei	0.1	0.1	0.1	0.1	0.1	0.2	0.2	0.2	0.1	0.1	0.1	0.3	0.2	0.4	0.3	0.1	0.2	0.4	0.3	0.7	0.8	0.1
Marghita	0.3	0.3	0.2	0.2	0.3	0.3	0.4	0.5	0.5	0.5	0.7	0.6	0.6	0.7	0.6	0.5	0.4	0.6	0.5	0.5	0.4	0.4
Salonta	0.4	0.5	0.7	0.8	1.2	1.5	1.3	0.3	0.5	0.7	0.7	0.6	0.6	0.6	0.5	0.6	0.6	0.8	0.6	0.5	0.5	0.6
Tourist area of Borș commune	0.0	0.0	0.0	2.5	2.3	1.8	2.0	1.2	1.7	0.3	1.2	1.0	1.1	0.8	0.8	0.8	0.8	0.6	0.9	1.0	1.0	1.1
Stăna de Vale	75.6	27.3	27.3	18.8	15.0	11.1	8.6	5.9	9.1	5.7	5.6	31.0	27.5	10.3	5.7	2.4	1.3	1.4	1.4	0.0	0.0	0.0
Mădăraș	56.5	51.9	11.1	34.1	15.4	21.2	15.6	8.1	8.9	9.2	4.1	2.3	2.5	2.3	2.0	0.7	1.3	2.1	1.9	2.4	2.5	0.0
Săcueni	0.0	0.0	0.1	0.2	0.3	0.1	0.1	0.2	0.2	0.2	0.2	0.1	0.4	0.3	0.2	0.1	0.0	0.0	0.0	0.0	0.4	1.2
Tinca	0.0	0.0	0.0	0.0	0.0	0.0	0.0	0.0	0.0	0.0	0.0	0.0	0.0	0.0	0.0	0.0	0.0	0.0	0.0	0.8	0.0	0.0
Vadu Crișului	0.0	0.0	0.3	0.3	0.5	0.0	0.5	0.5	5.4	4.9	3.7	5.8	5.7	5.9	4.6	3.6	3.8	2.4	2.8	2.0	2.0	1.0
Băile Figa Recreation Area - Beclean city	0.3	0.2	0.2	0.1	0.1	0.1	0.2	0.5	0.4	0.2	0.4	0.1	0.2	0.1	0.9	1.2	1.1	1.5	1.3	0.2	0.2	0.6
Sângeorz-Băi	22.6	13.3	15.3	12.0	11.8	14.1	14.4	12.9	12.7	9.6	5.7	10.0	10.1	7.8	9.4	8.9	6.3	7.9	6.1	7.1	3.5	4.5
Colibița	0.0	0.0	0.0	0.0	0.0	0.0	0.0	0.0	0.0	1.1	1.8	2.1	2.7	4.1	2.4	2.7	2.1	7.9	9.7	14.4	16.7	17.2
Rodna	0.0	0.0	0.0	0.0	0.4	1.1	3.5	3.5	0.2	0.5	7.7	8.5	6.4	7.6	6.6	9.1	9.6	7.4	0.9	3.0	3.3	4.2
Poiana Brașov	3.0	2.6	2.0	1.6	2.6	2.6	2.5	2.6	2.6	2.8	2.6	2.6	2.5	2.3	2.1	2.3	2.3	2.7	2.5	2.6	2.1	2.2
Predeal/Pârâul Rece/Timișu de Sus	48.8	45.3	38.0	34.4	34.9	34.8	32.6	34.7	29.5	28.9	32.8	36.5	40.1	33.5	36.9	23.2	23.8	36.0	38.1	37.9	33.6	29.8
Râșnov	1.0	1.3	0.5	1.8	2.3	2.2	2.2	3.4	5.0	4.5	4.4	5.4	6.6	7.2	6.0	6.0	9.1	7.4	6.0	6.3	4.9	6.6
Săcele	0.3	0.3	0.3	0.2	0.4	0.4	0.5	0.8	2.0	2.4	1.3	3.2	4.0	3.9	4.0	2.9	2.9	3.0	4.1	4.3	2.2	2.0
Bran	7.1	5.2	6.8	10.6	11.6	13.3	12.7	18.8	23.5	26.1	31.4	25.4	22.9	28.6	28.1	29.8	34.3	35.9	38.8	39.8	34.6	26.2
Moieciu	1.8	3.0	3.7	7.1	10.7	10.2	11.2	14.8	15.3	17.5	21.2	22.0	19.3	18.6	20.3	27.0	20.7	35.5	32.8	16.7	16.4	16.5
Vama Buzăului	0.0	5.3	6.7	11.9	5.3	4.2	5.1	5.2	0.8	0.0	0.0	0.0	0.0	0.0	0.0	0.0	0.9	0.8	0.8	2.2	1.8	1.8
Lacu Sărat	0.3	0.2	0.4	0.3	0.5	0.8	0.6	0.9	0.9	1.1	1.1	1.2	1.5	0.8	1.0	0.6	1.1	1.2	1.2	1.8	1.9	1.5
Sărata Monteoru	1.6	2.2	1.6	7.6	10.6	10.0	8.4	12.0	11.3	10.2	11.9	11.4	11.9	15.0	17.7	16.0	16.6	15.9	15.8	12.3	10.4	7.3
Gura Sîriului	0.0	0.0	0.0	0.0	0.0	0.0	0.0	0.0	0.0	0.0	0.8	1.2	0.6	3.4	3.1	3.8	6.4	7.5	11.7	10.2	9.6	13.9
Secu	1.7	1.5	1.2	1.0	0.7	0.7	0.7	0.6	0.6	0.6	0.6	0.8	0.7	0.8	0.8	1.1	1.1	1.0	1.1	1.5	1.1	1.2
Anina	0.0	0.0	0.0	0.0	0.0	0.0	0.0	0.0	0.0	0.0	0.0	0.0	0.0	0.0	0.3	0.7	0.4	0.4	0.4	0.9	1.9	4.1



Tourism resorts/years	2000	2001	2002	2003	2004	2005	2006	2007	2008	2009	2010	2011	2012	2013	2014	2015	2016	2017	2018	2019	2020	2021
Băile Herculane	58.7	64.3	68.1	66.5	62.8	74.5	53.0	45.0	36.7	27.7	27.0	16.4	16.4	19.1	14.1	22.0	25.0	29.2	37.8	36.9	38.7	35.1
Berzasca	0.0	0.0	0.0	0.0	0.0	2.6	10.5	8.0	17.6	13.9	0.0	0.0	1.4	6.1	9.3	9.4	12.8	15.5	17.2	16.5	15.0	17.3
Trei Ape	50.0	100.0	0.0	57.1	66.7	71.4	60.0	75.0	75.0	69.2	87.5	57.1	47.1	80.0	100.0	80.0	60.0	50.0	66.7	30.8	45.5	33.3
Mehadia	1.5	5.5	14.7	9.8	7.7	12.1	9.7	9.1	7.1	8.7	2.6	6.3	1.0	1.0	4.6	5.5	2.3	8.0	11.5	10.1	7.4	1.1
Coronini	0.0	0.0	0.0	0.0	0.0	0.0	0.0	0.0	0.0	0.0	0.0	0.0	0.0	12.8	25.7	16.7	12.2	16.1	3.6	2.8	12.1	17.6
Borlova Area - Muntele Mic, Turmu Ruieni commune	0.0	0.0	0.0	4.8	25.7	19.2	8.3	7.7	12.0	10.0	5.2	6.9	3.4	3.2	3.0	9.0	7.4	8.5	9.6	7.4	9.1	6.6
Crivaia/Semenic	0.0	0.0	0.0	37.0	56.1	24.2	39.0	37.3	31.7	35.2	38.5	42.6	49.4	28.9	8.9	20.5	10.4	25.5	24.2	23.5	21.5	20.0
Băile Ocna Dej Area (Dej municipality)	0.7	0.7	0.8	0.9	1.1	1.1	0.9	0.8	1.0	0.9	0.9	0.9	0.8	0.8	0.8	0.9	1.2	1.5	1.1	1.0	0.8	0.7
Băile Turda	0.9	1.2	0.7	1.0	1.1	1.1	1.2	1.5	1.6	1.9	2.3	2.6	2.1	2.4	4.0	3.2	3.0	3.6	3.4	3.4	2.8	2.9
Băile Băița	0.2	0.2	0.2	0.1	0.2	0.4	0.5	0.7	0.9	0.6	0.6	0.6	0.6	0.5	0.6	0.6	0.7	1.4	1.7	1.6	1.4	1.3
Muntele Băișorii Area	0.0	0.0	0.0	3.3	6.7	13.6	8.7	6.3	8.6	8.7	30.0	20.0	12.9	7.0	17.8	27.3	43.3	21.8	19.5	7.9	5.6	7.2
Jucu	0.0	0.0	0.0	0.0	0.0	0.0	0.0	0.0	0.0	0.0	0.0	0.0	0.0	0.0	0.0	0.0	0.0	0.0	0.0	0.2	0.0	0.0
Fântânele Area	0.0	0.0	0.0	0.0	0.0	0.0	0.0	10.9	0.0	0.0	0.0	0.0	0.0	0.0	0.0	0.0	0.0	0.0	0.0	1.2	2.4	3.3
Mamaia	2.9	7.6	2.4	2.3	3.1	2.3	2.3	1.9	2.7	1.7	2.7	2.6	2.5	2.6	2.7	3.2	3.3	3.3	3.4	3.7	3.2	3.3
North Eforie/ South Eforie	36.4	43.1	34.5	35.7	31.1	20.9	21.2	20.2	18.8	18.9	17.1	16.4	16.2	17.3	20.3	23.7	26.3	18.2	18.7	21.5	19.3	18.7
Mangalia (Cap Aurora, Jupiter, Neptun-Olimp, Saturn, Venus)	23.5	23.5	19.6	14.7	22.5	16.3	15.0	13.6	12.3	12.2	10.9	11.8	9.0	12.2	10.6	10.6	11.2	12.9	15.3	15.1	18.0	20.2
Mamaia North Area	0.1	0.7	0.8	0.6	0.6	0.7	0.7	0.5	0.5	0.6	0.6	0.5	1.6	2.4	1.1	1.7	2.4	3.6	3.8	4.4	5.5	5.3
Techirghiol	6.3	6.3	8.9	9.1	4.7	4.8	4.0	5.1	4.5	4.6	5.4	6.2	6.7	3.0	5.0	2.7	3.0	3.0	3.4	3.7	4.0	4.7
Costinești	39.3	38.1	34.5	31.7	33.2	29.6	32.1	23.8	29.7	29.6	26.1	21.9	18.0	15.3	7.5	9.7	8.0	10.7	9.6	8.3	6.1	19.2
Covasna	19.7	19.1	18.7	16.1	15.6	13.4	11.3	11.9	14.9	12.0	13.1	12.8	14.5	14.1	14.3	15.1	17.0	17.4	23.8	24.5	23.2	21.7
Balványos	19.7	19.0	17.6	0.0	15.3	0.0	0.0	14.7	0.0	18.3	19.2	16.7	15.6	14.7	12.1	13.4	14.1	11.0	10.0	13.3	9.7	12.6
Pucioasa	4.2	3.7	2.4	1.7	1.3	1.6	1.4	1.5	1.4	1.6	1.8	2.0	1.6	1.7	1.6	0.2	1.5	1.4	1.4	1.7	1.2	1.6
Peștera - Padina Area	2.8	5.1	3.1	4.3	4.5	3.9	4.5	3.9	4.3	5.2	5.4	8.2	11.3	13.5	15.3	15.3	15.9	13.0	14.6	14.1	12.0	15.6
Tulucești	0.0	0.0	0.0	0.0	0.0	0.0	0.0	0.0	0.0	0.0	0.0	0.0	0.0	0.0	0.0	0.0	0.0	0.0	0.0	0.0	0.0	0.0
Novaci	0.6	0.4	0.4	0.3	0.3	1.0	0.5	0.2	0.0	0.2	0.2	1.3	1.1	0.8	1.1	1.6	2.0	1.5	0.8	1.2	1.5	2.1
Baia de Fier	3.4	0.9	2.8	3.3	2.1	8.9	6.5	6.3	6.1	6.9	5.7	5.1	8.2	7.4	5.6	5.9	4.9	5.2	3.5	2.6	4.4	4.6
Peștișani	0.0	0.0	0.0	0.0	0.0	0.0	0.0	0.0	0.5	0.0	1.8	3.4	1.5	1.5	1.4	2.7	1.6	1.8	2.5	2.4	2.1	1.8
Polovragi	19.0	14.3	13.3	12.5	10.0	7.0	2.3	1.8	0.0	0.0	0.0	0.0	0.8	0.8	0.6	0.6	1.2	3.8	1.6	4.2	5.3	2.9
Săcelu	0.0	0.0	0.0	50.0	14.3	14.3	5.3	10.0	4.8	0.0	0.0	0.0	0.0	0.0	0.0	0.0	0.0	0.0	0.0	5.3	8.7	3.2
Harghita-Băi	0.9	1.6	1.2	1.5	1.5	1.6	1.4	1.3	1.4	1.6	1.5	1.4	1.4	1.2	1.4	1.2	1.3	1.2	1.2	1.4	1.2	1.6
Băile Tușnad	77.2	76.9	74.9	78.6	75.7	67.4	64.9	69.4	55.4	55.7	45.2	36.8	17.0	47.3	47.2	50.4	48.4	50.6	52.5	52.1	50.8	56.3
Borsec	6.8	0.0	10.4	5.4	4.5	4.0	3.8	0.5	0.7	0.5	0.4	0.5	0.4	0.3	0.3	0.3	0.3	0.3	0.3	0.8	0.7	0.6
Lacu Roșu	3.7	0.8	2.1	2.2	1.9	2.4	2.4	2.9	2.9	2.6	3.0	3.0	2.8	2.5	2.6	3.4	3.7	3.6	3.2	3.3	2.8	2.4
Băile Banffy Area (Toplița municipality)	0.4	0.4	0.4	0.3	0.3	0.3	0.5	0.4	0.5	0.4	0.5	0.3	0.6	0.6	0.4	0.7	0.8	1.0	2.3	2.1	2.0	2.8
Băile Homorod	0.4	0.9	1.0	1.5	1.7	2.3	2.3	2.5	3.0	4.3	4.0	3.8	3.6	4.2	4.8	4.2	3.7	4.8	4.1	3.7	4.0	3.1
Corund	0.0	0.0	0.0	0.0	0.0	0.0	0.0	0.0	0.0	0.5	0.5	0.5	0.0	0.0	0.0	0.0	0.0	0.4	0.8	0.8	0.5	1.9
Praid	19.4	23.1	16.0	14.7	15.6	15.0	11.2	15.0	9.5	9.7	11.3	10.9	12.8	12.7	11.7	13.2	13.1	14.5	17.8	17.2	10.8	10.5
Izvoru Mureșului	0.0	0.0	0.0	1.3	1.1	0.7	0.8	0.8	2.0	1.2	1.8	2.9	2.1	0.0	1.0	0.0	0.0	0.0	0.0	0.0	0.0	0.0
Zetea	1.9	1.8	2.6	2.0	2.1	2.1	1.3	1.5	1.7	2.4	3.1	2.2	2.3	2.5	2.9	5.0	4.8	5.6	6.3	6.6	7.6	7.5
Zona Parâng - Petroșani	0.4	0.4	0.6	0.5	0.4	0.4	0.4	0.3	0.4	0.3	0.6	1.0	0.5	1.1	1.1	1.1	1.5	1.6	1.5	1.8	1.7	2.8

Tourism resorts/years	2000	2001	2002	2003	2004	2005	2006	2007	2008	2009	2010	2011	2012	2013	2014	2015	2016	2017	2018	2019	2020	2021
Straja	1.2	0.9	1.3	0.8	0.9	0.9	0.4	0.6	0.6	0.5	0.7	1.0	1.0	1.4	0.9	1.4	1.6	1.3	1.3	1.5	1.7	2.1
Uricani	0.0	0.0	0.0	0.0	0.0	0.0	0.0	0.0	0.2	0.3	1.3	1.4	1.2	1.2	0.9	1.7	1.1	1.0	0.7	0.3	0.3	0.2
Geoagiu-Băi	13.0	14.4	8.8	17.7	18.0	21.7	14.5	13.3	32.1	32.0	32.3	32.6	28.4	31.7	30.1	29.9	32.0	28.1	29.2	26.7	16.6	21.7
Văța de Jos	1.7	1.3	0.8	0.9	0.9	1.1	1.2	1.0	3.1	3.3	2.2	2.9	5.7	4.1	3.8	3.9	0.7	0.0	0.0	0.7	0.9	0.0
Amara	12.0	9.6	5.4	5.4	5.0	5.6	6.8	7.3	6.9	8.9	9.1	2.0	1.8	8.4	9.5	11.9	10.3	10.1	10.3	11.2	12.3	10.6
Snagov	2.7	1.1	0.0	0.0	0.0	1.2	1.2	2.5	2.5	3.5	2.8	3.7	2.6	3.0	1.4	5.7	7.6	3.0	6.2	4.7	2.9	3.0
Tăuții-Măgherauș	0.0	0.0	0.0	0.7	0.0	2.1	1.7	1.0	0.7	0.2	0.3	0.2	0.1	0.1	0.1	0.1	0.1	0.1	0.1	0.1	0.0	0.1
Sighetu Marmației	0.9	0.4	0.5	1.0	0.9	0.9	1.1	1.1	1.4	1.4	1.3	1.5	1.2	0.8	1.1	0.8	0.6	0.9	0.7	1.9	1.2	1.6
Suior-Baia Sprie Area	0.8	1.3	2.5	3.3	3.8	3.4	3.4	3.6	4.0	1.2	5.2	4.5	4.1	3.1	2.9	3.4	3.6	4.7	5.3	4.8	4.6	4.1
Borșa	5.8	6.3	5.1	5.4	6.5	14.2	14.6	10.3	8.7	7.4	4.0	6.7	5.8	2.8	2.8	5.8	4.0	5.0	4.5	4.7	5.1	4.8
Cavnic	3.8	2.3	2.1	2.1	3.1	3.3	1.6	3.9	4.9	2.4	3.3	2.7	3.5	2.1	1.8	1.0	0.7	1.3	2.4	2.1	1.8	1.6
Vișeu de Sus	1.0	1.1	1.0	1.3	1.3	0.8	0.8	1.1	1.1	1.5	1.3	1.7	2.3	2.1	2.0	3.3	5.0	5.4	4.3	5.1	3.8	4.7
Bărsana	0.0	0.0	0.0	0.0	3.8	1.7	1.0	2.1	0.6	0.0	1.2	1.3	1.1	1.2	0.7	0.6	1.1	1.1	1.5	1.2	0.7	0.3
Botiza	0.0	0.0	0.0	11.1	0.0	0.0	33.3	24.0	23.3	28.6	25.7	21.4	7.1	8.7	13.0	14.3	20.0	20.0	29.2	19.5	15.4	2.6
Moisei	0.0	0.0	0.0	0.0	0.0	0.0	0.0	0.3	0.6	5.4	5.2	4.8	5.4	0.4	0.4	0.3	0.2	0.7	0.7	1.7	1.8	1.3
Ocna Șugatag	0.0	0.0	0.0	0.7	3.8	4.2	6.9	10.2	13.4	15.1	13.6	16.4	20.3	20.4	16.0	23.9	24.8	18.7	21.1	20.2	19.9	20.8
Săpânța	35.3	28.6	0.0	3.7	3.4	2.6	13.9	9.4	14.5	14.3	3.4	20.5	7.8	6.7	2.5	8.1	12.3	19.7	24.6	24.7	20.0	14.5
Bala	0.0	0.0	0.0	0.0	0.0	0.0	0.0	0.0	0.0	0.0	0.0	0.0	0.0	0.0	0.0	0.0	0.0	0.0	0.0	0.0	0.0	0.0
Sângeorgiu de Mureș	3.8	3.5	1.9	1.3	1.3	1.3	1.9	2.9	3.9	5.0	4.1	4.0	5.1	5.1	5.6	6.0	6.6	6.4	6.0	5.6	5.8	5.5
Sovata	18.8	15.9	13.7	15.9	16.7	15.1	13.7	12.4	14.1	15.4	16.2	17.0	18.0	18.4	17.9	20.0	22.5	22.7	20.0	21.0	20.4	21.1
Tourist area of Piatra-Neamț municipality	1.7	1.4	1.5	1.5	1.5	1.5	1.6	1.7	1.7	1.8	1.6	1.5	1.6	1.7	1.4	1.5	1.8	1.9	1.9	2.0	1.8	1.5
Târgu-Neamț	1.5	1.3	1.3	2.9	2.6	2.5	1.3	1.3	1.5	1.7	1.8	1.2	1.0	1.5	1.3	1.0	1.4	1.0	1.0	1.3	1.5	1.2
Băljătești	0.0	0.0	0.0	0.0	0.3	0.3	0.4	0.6	1.3	0.8	2.8	2.2	3.1	3.5	0.6	1.2	0.0	0.0	0.0	0.4	0.7	0.0
Durău	44.9	13.6	10.0	33.3	38.7	33.3	30.2	25.6	24.1	26.3	29.7	31.5	13.6	12.3	10.3	31.0	29.3	20.2	18.4	16.7	20.5	14.2
Azuga	0.2	0.5	0.4	1.3	1.6	1.9	4.4	5.2	4.6	5.3	6.8	4.8	8.3	9.5	6.8	4.1	3.0	2.6	2.9	14.2	14.0	13.5
Breaza	2.4	2.8	2.4	1.9	2.0	1.9	1.8	1.7	1.7	1.8	1.7	1.7	1.7	2.0	0.8	0.0	0.0	1.1	1.2	1.7	1.5	1.4
Bușteni	24.1	26.5	26.9	25.3	23.0	21.6	23.2	20.3	18.8	18.6	18.3	15.4	21.2	20.4	19.4	16.9	18.7	15.7	13.6	14.1	12.4	11.9
Sinaia	17.6	18.7	15.1	14.7	16.2	18.2	19.1	19.6	19.5	17.9	21.0	19.3	20.1	19.0	18.3	26.3	30.3	30.9	31.2	33.1	30.3	27.6
Slănic Prahova	67.3	73.9	70.4	56.8	55.6	49.6	48.1	47.0	44.8	51.2	51.2	51.1	52.2	54.7	54.2	48.2	47.1	47.0	47.8	45.7	39.0	7.4
Vălenii de Munte	0.2	0.2	0.1	0.0	0.0	0.0	0.0	0.1	0.2	0.1	0.2	0.3	0.6	0.4	0.4	0.5	0.6	0.6	0.5	0.5	0.4	0.3
Cheia	1.3	4.1	4.5	3.8	3.9	3.2	2.8	2.9	3.7	4.4	4.8	4.8	7.0	7.5	9.5	3.9	3.0	3.8	2.5	4.3	4.6	4.3
Carei	1.1	1.1	0.7	0.5	0.5	0.3	0.3	0.7	0.4	0.3	0.3	0.2	0.2	0.4	0.4	0.2	0.2	0.2	0.2	0.2	0.2	0.2
Negrești-Oaș	0.1	0.1	0.1	0.1	0.1	0.1	0.2	0.2	0.2	0.3	0.2	0.1	0.2	0.3	0.3	0.3	0.4	0.3	0.6	0.7	0.7	0.7
Tâgșad	1.1	2.6	2.9	2.1	2.4	3.2	3.3	3.5	4.1	4.4	4.6	5.0	5.8	4.7	4.3	4.5	4.4	4.8	4.0	4.5	3.6	2.6
Livada	0.0	0.0	0.0	0.0	0.0	0.0	0.0	0.0	0.0	0.0	0.0	0.0	0.0	0.0	0.0	0.0	0.0	0.0	0.0	0.2	0.2	0.1
Vama	0.0	0.0	0.0	0.0	0.0	0.3	0.3	0.0	0.0	0.0	0.0	0.0	0.0	0.0	0.3	1.0	2.9	4.3	4.7	4.3	13.4	11.1
Păltiniș	1.8	1.2	2.3	2.5	3.0	3.2	1.5	3.1	3.4	3.6	3.7	3.7	4.4	3.7	3.3	3.6	3.5	2.5	2.5	2.2	1.4	1.1
Cismădie	0.3	0.1	0.6	2.6	3.2	2.5	2.2	0.6	0.5	0.5	0.3	0.3	0.3	0.8	0.3	0.2	0.2	0.2	0.3	0.3	0.2	0.3
Ocna Sibiului	0.0	0.0	0.0	1.1	0.8	0.6	0.9	0.6	0.9	23.0	33.0	1.4	0.8	1.8	3.1	2.2	3.5	1.5	3.1	1.3	1.0	1.5
Bazna	0.0	0.0	0.0	0.0	1.6	1.3	3.9	5.9	5.5	3.8	3.7	6.3	5.3	4.7	10.4	16.4	14.7	17.1	15.9	14.9	10.7	15.5
Cârțișoara	0.0	0.0	0.0	0.0	0.0	0.0	0.0	0.0	0.0	0.0	0.0	0.0	5.1	12.8	4.3	4.3	4.4	4.0	9.1	12.5	9.5	8.2

Tourism resorts/years	2000	2001	2002	2003	2004	2005	2006	2007	2008	2009	2010	2011	2012	2013	2014	2015	2016	2017	2018	2019	2020	2021
Cămpulung Moldovenesc	5.6	5.0	2.6	2.6	4.1	3.7	3.9	4.3	3.9	3.8	3.4	2.8	2.4	2.7	2.7	3.0	3.2	3.1	3.7	3.5	2.7	3.1
Gura Humorului	3.6	4.4	6.3	9.3	10.1	9.9	7.7	7.8	7.9	7.1	5.5	5.1	3.1	3.3	3.2	3.6	3.6	7.2	9.8	9.0	11.2	11.2
Solca	0.0	0.0	0.0	1.7	3.0	2.4	7.2	4.2	3.0	3.4	2.7	2.8	0.0	0.0	23.3	26.5	36.4	34.2	35.7	11.7	0.8	2.8
Vatra Dornei	5.6	3.5	6.7	7.5	9.0	10.3	13.4	13.4	13.1	15.5	14.3	13.7	15.8	16.4	15.4	14.4	13.8	13.5	14.8	16.2	13.5	13.1
Cacica	0.0	0.0	0.0	0.0	0.0	0.0	0.0	0.0	0.0	0.9	0.8	1.4	1.4	2.3	3.3	3.0	2.4	2.8	2.9	2.2	1.7	1.2
Dorna-Arini	1.2	0.6	0.0	0.0	0.7	2.8	2.9	3.2	3.1	6.3	7.2	5.9	11.6	16.1	15.2	9.3	14.9	3.9	5.0	1.3	7.6	9.5
Dorna Candrenilor	0.0	0.0	0.0	0.0	0.0	0.0	0.0	0.3	1.1	1.4	2.0	2.5	2.9	1.8	3.7	4.0	4.4	3.8	2.9	3.7	5.1	8.3
Frumosu	0.0	0.0	0.0	0.0	1.5	2.3	4.7	6.3	5.7	2.0	1.3	1.9	0.6	0.0	0.0	0.0	0.0	0.0	0.0	0.0	0.0	0.0
Fundu Moldovei	0.0	0.8	0.0	2.6	3.2	3.2	2.1	4.0	4.1	2.8	3.6	4.5	2.6	5.5	2.8	3.1	2.6	1.9	1.4	0.6	16.0	16.3
Mălini	1.2	2.1	1.9	1.5	3.1	3.3	4.0	3.9	3.2	2.4	1.8	1.3	2.0	2.7	1.7	2.1	1.7	2.1	2.7	5.9	4.8	4.2
Moldovița	11.5	8.3	3.8	1.9	2.3	2.9	1.4	2.5	1.9	3.0	2.5	2.1	4.0	1.0	2.3	0.6	2.6	2.5	2.9	3.3	0.4	1.0
Panaci	0.0	0.0	0.0	0.0	0.0	0.0	0.0	0.0	0.0	0.0	0.0	1.1	2.4	4.1	5.0	6.6	5.8	7.0	5.6	0.9	1.0	1.7
Poiana Stampei	0.0	0.0	0.0	0.0	0.0	0.0	4.3	4.7	5.8	3.1	3.0	1.9	0.0	4.3	0.6	0.0	0.0	0.0	0.0	0.0	0.0	0.0
Pojorâta	0.5	0.3	1.6	1.9	2.4	3.2	4.0	4.1	4.7	6.3	5.1	5.1	5.6	5.9	5.4	5.3	5.3	6.8	6.8	6.8	4.9	6.1
Putna	6.0	5.1	8.3	4.6	6.1	6.5	9.9	14.0	12.4	8.8	10.9	12.8	10.5	12.6	8.7	11.1	9.6	7.0	5.9	5.7	5.1	5.6
Sadova	7.5	6.5	8.8	9.9	8.2	7.3	6.6	10.0	9.3	10.2	8.8	7.8	7.5	7.6	7.6	10.7	10.6	13.9	13.7	13.5	10.0	7.7
Sucevița	2.5	78.8	4.2	5.5	8.3	13.0	17.4	19.8	27.1	33.7	33.8	31.0	31.3	35.2	35.0	7.0	6.5	32.1	32.2	28.7	19.1	22.6
Șaru Dornei	0.0	0.0	1.9	0.6	5.3	3.9	2.4	0.9	0.8	0.9	5.2	3.6	3.3	2.1	2.2	4.5	4.9	3.9	6.7	10.0	8.4	4.4
Vama	2.3	1.5	2.1	2.4	4.9	3.8	2.4	4.7	4.5	4.2	4.4	3.6	3.3	2.0	3.3	2.1	2.6	2.8	2.9	2.5	2.4	2.5
Vatra Moldoviței	0.0	0.0	3.3	3.0	3.8	2.4	2.2	3.5	3.1	2.9	1.4	1.4	0.8	1.4	0.7	0.7	2.2	2.3	0.9	2.0	2.0	2.0
Buziaș	12.3	12.3	28.7	14.3	11.9	12.0	16.3	12.0	12.8	12.4	10.9	11.3	11.9	12.3	0.0	9.6	9.5	9.8	7.9	6.6	6.6	5.4
Deta	0.0	0.0	0.0	0.0	0.4	0.9	1.0	2.4	0.8	1.0	0.9	0.6	0.0	0.8	0.6	0.3	0.2	0.1	0.0	0.0	0.0	0.0
Jimbolia	0.0	0.0	0.0	0.0	0.0	0.1	0.2	0.1	0.0	0.2	0.2	0.0	0.0	0.1	0.2	0.1	0.0	0.0	0.0	0.0	0.0	0.0
Sănnicolau Mare	1.0	0.4	0.4	0.3	0.2	0.2	0.2	0.2	0.2	0.2	0.3	0.2	0.2	0.2	0.1	0.3	0.3	0.3	0.5	0.6	0.4	0.4
Călacea	0.0	0.0	0.0	0.0	0.0	0.0	0.0	0.0	0.0	0.0	0.0	0.2	0.1	0.1	0.0	0.1	0.2	0.2	0.2	1.8	0.2	0.1
Băile Govora	70.8	69.4	74.5	69.1	66.8	64.4	62.5	59.2	55.5	51.5	46.5	48.6	47.7	57.8	58.6	0.0	0.0	0.0	0.0	45.3	29.5	32.5
Băile Olănești	9.6	30.2	40.9	36.4	48.6	51.2	44.6	41.6	37.1	38.2	38.2	37.4	41.3	46.2	43.5	15.4	10.4	10.8	16.6	37.8	28.5	29.6
Brezoi	3.8	3.1	2.1	3.0	1.4	2.0	2.6	3.7	4.6	3.9	4.4	10.3	13.4	20.7	15.4	16.0	9.0	13.1	12.4	11.7	9.1	10.0
Călimănești-Căciulata	41.4	50.1	51.7	51.2	51.1	44.2	42.3	32.5	21.7	20.7	24.4	20.4	42.3	51.4	54.1	55.0	55.1	63.3	58.6	58.7	50.9	50.8
Horezu	14.8	8.3	5.5	6.9	4.6	3.6	3.5	4.0	3.8	5.0	5.0	4.8	4.1	4.3	3.3	3.5	4.7	5.0	4.9	3.8	3.6	2.3
Ocnel Mari	0.0	6.1	49.1	39.7	37.6	36.4	26.7	17.7	16.6	17.8	17.4	17.9	35.0	2.9	1.0	4.0	3.1	0.0	0.0	2.2	2.6	6.1
Mălaia	0.0	0.0	0.0	1.6	5.0	5.4	2.4	2.8	3.8	5.3	5.3	3.5	3.3	3.5	0.6	2.7	3.2	3.2	3.6	4.0	5.2	4.8
Voineasa	3.4	0.0	0.0	0.0	1.0	1.5	2.4	1.2	7.8	4.7	5.2	4.2	2.1	2.8	1.7	4.9	4.3	3.6	2.6	2.2	1.8	2.1
Soveja	0.0	0.0	0.0	1.9	6.2	1.9	1.6	0.0	0.0	0.0	0.0	0.0	1.8	3.4	0.0	0.0	5.0	15.8	7.1	33.3	15.4	17.6
Oncești	0.0	0.0	0.0	0.0	0.0	0.0	0.0	0.0	0.0	0.0	0.0	0.0	0.0	0.0	0.0	0.0	1.7	2.5	3.6	3.0	2.2	2.0
Boghiș	0.0	0.0	0.0	0.0	0.0	0.0	0.0	0.0	0.0	2.6	3.8	8.8	12.5	15.6	22.2	13.0	11.8	8.7	8.5	5.0	0.0	1.8

Data source: project UB/1365

## 4. Conclusions

From the analysis of tourist resorts in Romania through the prism of the two indicators considered relevant, turnover and number of employees in the tourism sector, we observe paradoxical developments. Although these territorial administrative units have the status of tourist resorts and tourism should be the core activity, a large number of resorts have low shares of tourism-specific values. Thus, tourism represents a complementary economic activity to the local economy for most resorts or almost does not interfere with the economic system (Bala resort where the tourism sector is missing, Jucu, Livada, Jimbolia, Tuluceți - which in most years had no indicator records). Of the 166 resorts analyzed and existing in Romania in 2022, in accordance with Government Decision no. 910 of 2022, only Moneasa, Slănic Moldova, Predeal/Pârâul Rece/Timișul de Sus,

Băile Herculane, Trei Ape, Băile Tușnad, Băile Olănești, Călimănești-Căciulata, Băile Govora, Sinaia and Slănic Prahova (exception year 2021, when, due to the pandemic, the share of the two indicators decreased significantly in this resort), they stand out with significant shares to the local economy both in terms of tourism turnover and in terms of employees.

The activity with the highest recorded values in the tourism sector is Hotels and similar accommodation, with shares ranging from 56% to 72% of turnover and 65% to 87% of employees.

The analyses show that tourist resort status is not necessarily conditioned by the high share of the tourism sector in the local economy, but rather by a number of factors, including the presence of tourism activities and the willingness of local authorities to support these activities (Drăghici et al., 2014).

## References

- Andrades, L., & Dimanche, F. (2017). Destination competitiveness and tourism development in Russia: Issues and challenges. *Tourism Management*, 62, 360-376. doi:10.1016/j.tourman.2017.05.008
- Belloumi, M. (2010). The Relationship between Tourism Receipts, Real Effective Exchange. *International Journal of Tourism Research*, 550-560. doi:10.1002/jtr.774
- Briedenhann, J., & Wickens, E. (2004). Tourism routes as a tool for the economic development of rural areas: Vibrant hope or impossible dream? *Tourism Management*, 25, 71-79. doi:10.1016/S0261-5177(03)00063-3
- Chen, C. F., & Chiou-Wei, S. (2009). Tourism expansion, tourism uncertainty and economic. *Tourism Management*, 30, 812-818. doi:10.1016/j.tourman.2008.12.013
- Croes, R., & Venegas, M. (2008). Cointegration and causality between tourism and poverty reduction. *Journal of Travel Research*, 47, 97-103. doi:10.1177/0047287507312429.
- Daniels, M. J., Drogin Rodgers, E. B., & Wiggins, B. P. (2005). "Travel Tales": An interpretive analysis of constraints and negotiations to pleasure travel as experienced by persons with physical disabilities. *Tourism Management*, 26, 919-930. doi:10.1016/j.tourman.2004.06.010
- Drăghici, C.C.; Pintilii, R.D.; Peptenatu, D.; Comănescu, L.G.; Sirodoev, I. The Role of SPA Tourism in the Development of Local Economies from Romania. In *Proceedings of the 2nd Global Conference on Business, Economics, Management and Tourism, Prague, Czech Republic, 30–31 October 2014*; pp. 1573–1577.
- Dristakis, N. (2004). Tourism as a long-run economic growth factor: an empirical investigation for Greece using causality analysis. *Tourism Economics*, 10(3), 305-316. doi:10.5367/0000000041895094
- Garcia, A. (2005). "Turismo y Desarrollo Economico. Un Acercamiento al Caso Cubano.". *Temas*, 43, 43-55.
- Hernandez, R. M., & Gonzalez, O. (2013). Rural Lodging Establishments as Drivers of Rural Development. *Journal of Travel Research*, 53(1).
- Holzner, M. (2011). Tourism and economic development: The beach disease? *Tourism Management*, 32(4), 922-933. doi:10.1016/j.tourman.2010.08.007
- Ma, M., & Hassink, R. (2013). An evolutionary perspective on tourism area development. *Annals of Tourism Research*, 41, 89-109. doi:10.1016/j.annals.2012.12.004.

- Matarrita-Cascante, D. (2010). Changing communities, community satisfaction, and quality of life: A view of multiple perceived indicators. *Social Indicators Research*, 98(1), 105-127. doi:10.1007/s11205-009-9520-z
- Moscardo, G., Konovalov, E., Murphy, L., Mcgehee, N. G., & Schurmann, A. (2017). Linking tourism to social capital in destination communities. *Journal of Destination Marketing and Management*, 6(4), 286-295
- Ohlan, R. (2017). The relationship between tourism, financial development. *Future Business Journal*, 9-22. doi:http://dx.doi.org/10.1016/j.fbj.2017.01.003
- Peptenatu, D., Drăghici, C. C., Stoian, D., Pintilii, R. D., Cercleux, A. L., Merciu, C., & Schvab, A. (2014). Qualitative changes in the entrepreneurial sector in emerging territorial systems - Craiova case study. *Acta Geographica Slovenica-Geografski Zbornik*, 54, 293-304. doi:10.3986/AGS54204
- Pompurová, K., & Šimočková, I. (2014). Destination attractiveness of Slovakia: Perspectives of demand from major tourism source markets. *E&M Ekonomie a Management*, 17(3), 67-73. doi:10.15240/tul/001/2014-3-006
- Rosentraub, M. S., & Joo, M. (2009). Tourism and Economic Development: Which Investments Produce Gains for Regions. *Tourism Management*, 30(5), 759-770.
- Tang, C., & Tan, E. (2015). Does tourism effectively stimulate Malaysia's economic growth? *Tourism Management*, 46, 158-163. doi:10.1016/j.tourman.2014.06.020
- Tugcu, C. T. (2014). Tourism and economic growth nexus revisited: A panel causality analysis for the case of the Mediterranean Region. *Tourism Management*, 42, 207-212. doi:http://dx.doi.org/10.1016/j.tourman.2013.12.007.
- UNWTO, W. (2013). Why tourism? Preluat de pe <http://www2.unwto.org/en/content/why-tourism>.